

IPRO Program Learning Objectives and Program Reports Academic Year 2006/2007

Thomas Jacobius, Director and
Daniel Ferguson, Associate Director
Interprofessional Studies Program

- **Educational Goals of the IPRO Program:**
In an undergraduate multidisciplinary project team focused on a real world problem:

**Demonstrate Communication Competence,
Exhibit Effective Teamwork,
Project Manage Effectively,
Understand Ethical Behavior, and
an additional EnPRO Learning Objective,
Learn Business Planning Principles.**

- **Goals of the IPRO Assessment Process**

Measure how well we are teaching the learning objectives [set minimum standards]

Evaluate our interventions aimed at improving the IPRO experience

Benchmark our program against other leading ‘interprofessional’ studies programs

Publish our research results

- **Assessment measures available in Academic Year 05/06**
 - Self Assessment of Learning Objectives attainment**
 - Teamwork Surveys week 5 and 15**
 - IPRO Day judging of exhibits and presentations**
- **New assessment measures added in 06/07**
 - Learning Objectives Knowledge Tests**
 - Project Management [IPRO Deliverables] Grading**
 - Course Evaluations**
- **Assessment measures reconciled with restated Learning Objectives definitions in summer 06**
 - Peer reviews, Self Assessments of Learning Objectives, IPRO Day judging**



It takes a team
INTERPROFESSIONAL PROJECTS PROGRAM

Fall 05

IPRO	Fall 2005	IPRO DAY	SELF ASSESSMENT LO		LO TEST		TEAMWORK		mean position	mean percent not LO	IPRO TEAM RANK	
	Faculty	POSITION	PERCENT OF GOAL	POSITION	PERCENT OF GOAL	POSITION	PERCENT	POSITION				PERCENT OF GOAL
301	Al-Hallaj A	24	98.88%	11	102.75%	16	51.30%	18	98.75%	17.25	100.13%	20
302	Menhart H	1	114.50%	5	107.67%	17	51.11%	4	111.88%	6.75	111.35%	2
303	Ferguson D	11	107.69%	15	100.67%	7	58.13%	23	96.43%	14	101.59%	12
304	Abbasian J	29	90.69%	22	96.75%	24	47.00%	25	94.64%	25	94.03%	30
305	Sun X	30	105.75%	4	110.75%	11	54.41%	3	114.42%	12	110.31%	7
306	Yang E	17	90.13%	10	104.00%	8	56.71%	14	100.00%	12.25	98.04%	8
307	Rohter L	10	108.00%	19	98.58%	22	49.62%	12	101.21%	15.75	102.60%	15
310	Al-Hallaj S	20	104.75%	2	111.67%	5	60.22%	28	92.28%	13.75	102.90%	11
311	Frieder O	4	111.06%	6	106.83%	20	50.50%	1	118.30%	7.75	112.07%	3
313A	Maurer W	23	99.31%	14	101.08%	31	31.67%	20	97.81%	22	99.40%	26
313B	Maurer W	26	96.69%	14	101.08%	32	31.67%	21	97.81%	23.25	98.53%	27
314	Fagette P	31	68.88%	31	0.00%	33	0.00%	27	92.81%	30.5	53.90%	31
315	Cinar A	27	92.50%	21	96.83%	13	52.92%	5	111.70%	16.5	100.34%	18
317	Ruiz F	18	105.50%	1	114.25%	19	50.53%	8	106.79%	11.5	108.85%	6
318	Braucher C	15	106.25%	29	88.08%	34	0.00%	17	99.60%	23.75	97.98%	29
319	Anderson P	8	108.75%	12	102.67%	29	40.17%	26	93.35%	18.75	101.59%	22
329	Feinberg S	13	107.13%	26	94.75%	30	35.48%	9	106.21%	19.5	102.69%	25
333	Ferguson D	16	105.81%	13	101.33%	1	64.11%	2	118.57%	8	108.57%	4
335	Mohammad J	22	103.13%	8	106.08%	14	52.89%	22	97.54%	16.5	102.25%	17
338	Ferguson D	19	105.38%	23	96.50%	4	61.23%	29	89.02%	18.75	96.96%	23
339	Ferguson D	12	107.50%	27	94.50%	2	63.69%	15	99.91%	14	100.64%	13
340	Ferguson D	14	106.38%	9	105.00%	6	60.94%	24	96.25%	13.25	102.54%	10
341	Woerner J	5	111.00%	20	97.00%	9	56.43%	10	105.27%	11	104.42%	5
350	Braband J	2	114.50%	3	111.33%	3	63.08%	6	110.49%	3.5	112.11%	1
351	Braband J	6	110.56%	18	98.75%	23	48.89%	19	97.86%	16.5	102.39%	16
352	Tynan C	28	91.75%	25	94.83%	10	55.42%	31	87.05%	23.5	91.21%	28
353	Braband J	7	109.00%	16	99.83%	21	50.36%	7	109.55%	12.75	106.13%	9
354	Pistrui D	25	97.88%	7	106.25%	28	44.17%	16	99.96%	19	101.36%	24
355	Khalili H	21	103.63%	17	98.92%	18	51.11%	13	100.80%	17.25	101.12%	19
357	Bradband J	3	111.25%	24	95.67%	15	52.82%	30	88.97%	18	98.63%	21
358	Bradband J	9	108.13%	28	92.58%	12	53.25%	11	101.29%	15	100.67%	14
IPRO DAY IS PRESENTATION AND EXHIBIT TOTAL, 200 MAX POINTS, 160 POINTS MINIMUM GOAL												
LO TEST IS PERCENT CORRECT OF QUESTIONS ON TEST TWO, THE POST TEST, 80% MEAN CORRECT IS MINIMUM GOAL, spring is pilot test not in mean												
TEAMWORK SURVEY MINIMUM GOAL IS 22.4 OR 80% OF MAXIMUM 28 POINTS ON SEVEN SURVEY DIMENSIONS												
SELF ASSESSMENT IS 150 maximum and 120 goal [table B] and 12/15 goal and 12 desired minimum mean score [table C].												
yellow or blue and the team did not meet minimum standards purple and the team did not comply with IPRO Program Requirements												
No IPRO met the Learning Objectives Standard and this was a pilot semester test of the Learning Objectives Test												
Rounds to meet minimum standard												

Y



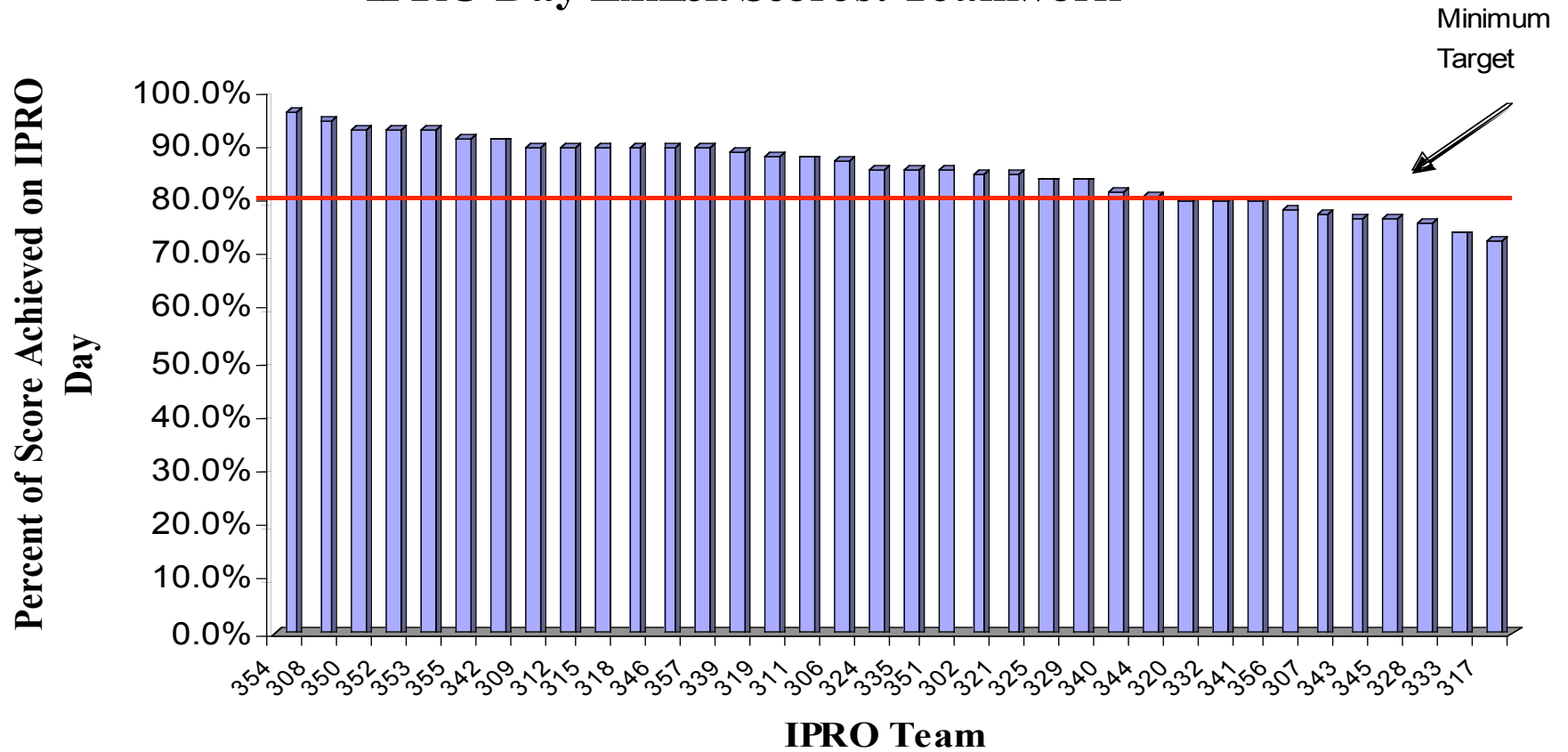
It takes a team
INTERPROFESSIONAL PROJECTS PROGRAM

Spring 06

IPRO	Faculty	IPRO DAY	SELF ASSESS LO		LO TEST		TEAMWORK		mean position	mean percent	IPRO TEAM RANK	
			POSITION	PERCENT OF GOAL	POSITION	PERCENT Correct	POSITION	PERCENT OF GOAL				
312	McKee K	2	117.0%	3	116.4%	11	63.6%	3	111.7%	4.8	115.1%	1
305	Sun X	4	116.4%	2	123.3%	14	62.4%	1	112.9%	5.3	117.5%	2
340	Ferguson D	3	116.5%	11	106.1%	5	67.6%	7	107.2%	6.5	109.9%	3
350	Braband J	14	108.8%	10	110.2%	4	70.0%	6	107.4%	8.5	108.8%	4
339	Ferguson D	11	111.0%	13	104.6%	6	67.5%	5	108.4%	8.8	108.0%	5
341	Woerner J	8	112.3%	5	113.0%	17	57.5%	8	106.4%	9.5	110.5%	6
330	Mostovoy S	5	114.0%	4	113.7%	26	41.2%	4	109.9%	9.8	112.5%	7
311	Frieder O	27	101.9%	1	120.2%	13	62.9%	2	112.7%	10.8	111.6%	8
351	Braband J	12	110.7%	8	113.5%	10	63.9%	14	102.8%	11.0	109.0%	9
303	Ferguson D	1	117.6%	12	104.2%	7	64.7%	27	93.1%	11.8	105.0%	10
302	Menhart H	13	110.4%	15	104.7%	12	63.5%	9	105.9%	12.3	107.0%	11
304	Yee W	6	113.6%	6	113.1%	22	53.5%	16	102.6%	12.5	109.8%	12
338	Ferguson D	9	111.3%	25	96.5%	2	71.6%	22	98.2%	14.5	102.0%	13
328	Snapper J	28	100.6%	14	102.3%	3	71.0%	13	103.9%	14.5	102.3%	14
319	Anderson P	7	113.1%	27	99.6%	1	71.7%	26	93.9%	15.3	102.2%	15
333	Ferguson D	10	111.1%	23	102.9%	9	64.0%	24	95.0%	16.5	103.0%	16
315	Budiman J	16	108.0%	22	99.9%	15	62.2%	21	98.2%	18.5	102.0%	17
307	Rohter L	25	102.5%	16	101.8%	8	64.4%	20	98.7%	17.3	101.0%	18
323	Maurer W	34	89.5%	7	112.8%	20	56.0%	11	104.9%	18.0	102.4%	19
313	Maurer W	31	97.4%	20	102.9%	16	58.2%	12	104.0%	19.8	101.4%	20
344	Davis B	30	97.7%	18	103.5%	24	50.3%	10	105.7%	20.5	102.3%	21
345	Abbasian J	26	102.3%	19	103.9%	23	50.9%	17	102.5%	21.3	102.9%	22
335	DeSantiago E	32	95.7%	9	110.2%	27	34.6%	18	100.6%	21.5	102.2%	23
301	Alhallaj S	20	105.0%	24	100.5%	25	42.4%	19	99.3%	22.0	101.6%	24
347	Abbasian J	18	106.9%	28	96.6%	19	56.6%	25	93.9%	22.5	99.2%	25
329	Feinberg S	22	104.1%	17	105.4%	28	29.9%	23	97.9%	22.5	102.5%	26
355	Khalili H	15	108.1%	21	100.9%	29	28.6%	29	90.8%	23.5	99.9%	27
331	Mostovoy S	33	94.1%	29	93.7%	21	54.6%	15	102.7%	24.5	96.8%	28
353	Braband J	29	97.7%	30	86.1%	18	57.3%	30	81.3%	26.8	88.4%	29
342	Williamson S	24	102.8%	26	97.4%	30	1.4%	28	91.5%	27.0		30
309	Meade K	21	104.9%	31	n/a	31	n/a	32	n/a	28.8		31
310	Alhallaj S	19	105.6%	32	n/a	32	n/a	33	n/a	29.0		32
357	Braband J	17	107.1%	36	n/a	36	n/a	31	69.2%	30.0		33
317	Ruiz F	23	103.6%	34	n/a	34	n/a	35	n/a	31.5		34
314	Fagette P	36	87.6%	33	n/a	33	n/a	34	n/a	34.0		35
320	Hamill-Governale	35	88.0%	35	n/a	35	n/a	36	n/a	35.3		36
IPRO DAY IS PRESENTATION AND EXHIBIT TOTAL, 200 MAX POINTS, 160 POINTS MINIMUM GOAL												
LO TEST IS PERCENT CORRECT OF QUESTIONS ON TEST TWO, THE POST TEST, 80% MEAN CORRECT IS MINIMUM GOAL.spring is pilot test												
TEAMWORK SURVEY MINIMUM GOAL IS 22.4 OR 80% OF MAXIMUM 28 POINTS ON SEVEN SURVEY DIMENSIONS												
SELF ASSESSMENT IS 150 maximum and 120 goal [table B] and 12/15 goal and 12 desired minimum mean score[table C].												
yellow and the team did not meet minimum standards												
purple and the team is not in compliance with IPRO Program requirements												

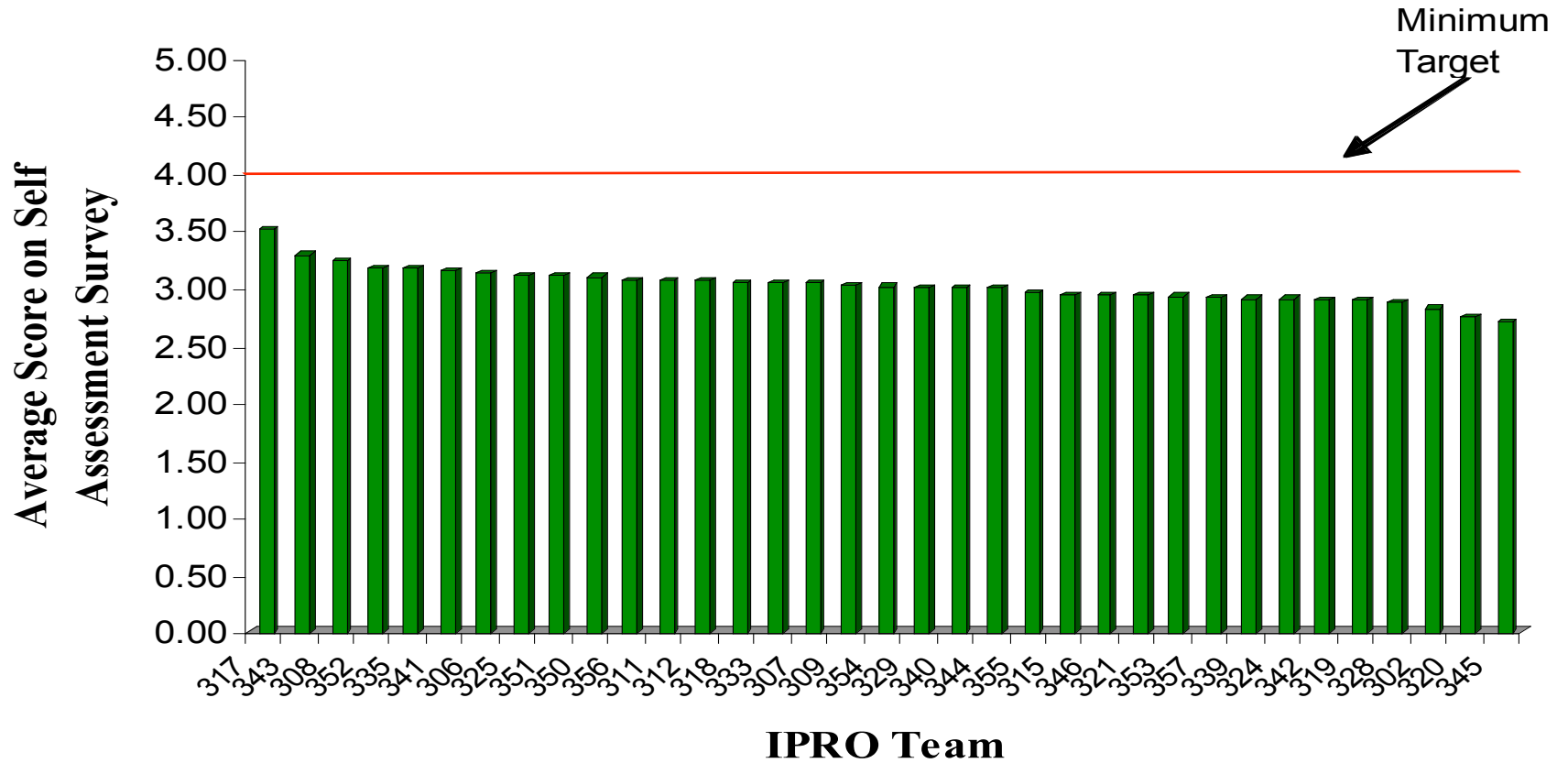
- Results shown to Undergraduate Studies Committee in spring 07 for AY 2005/06
- Most faculty and/or teams failed on one or more measures of minimum learning objectives performance of 80% in fall 2005.
- Significant improvement in minimum learning objectives performance occurred in spring 2006.
- IPRO Program as a whole exceeded the minimum goal of 80% of minimum average team score on equally weighted measures [Self Assessment, IPRO Day and Teamwork Survey] with an 81% overall team mean in fall 05 and an 84% overall team mean in spring 06.

I PRO Day Exhibit Scores: Teamwork

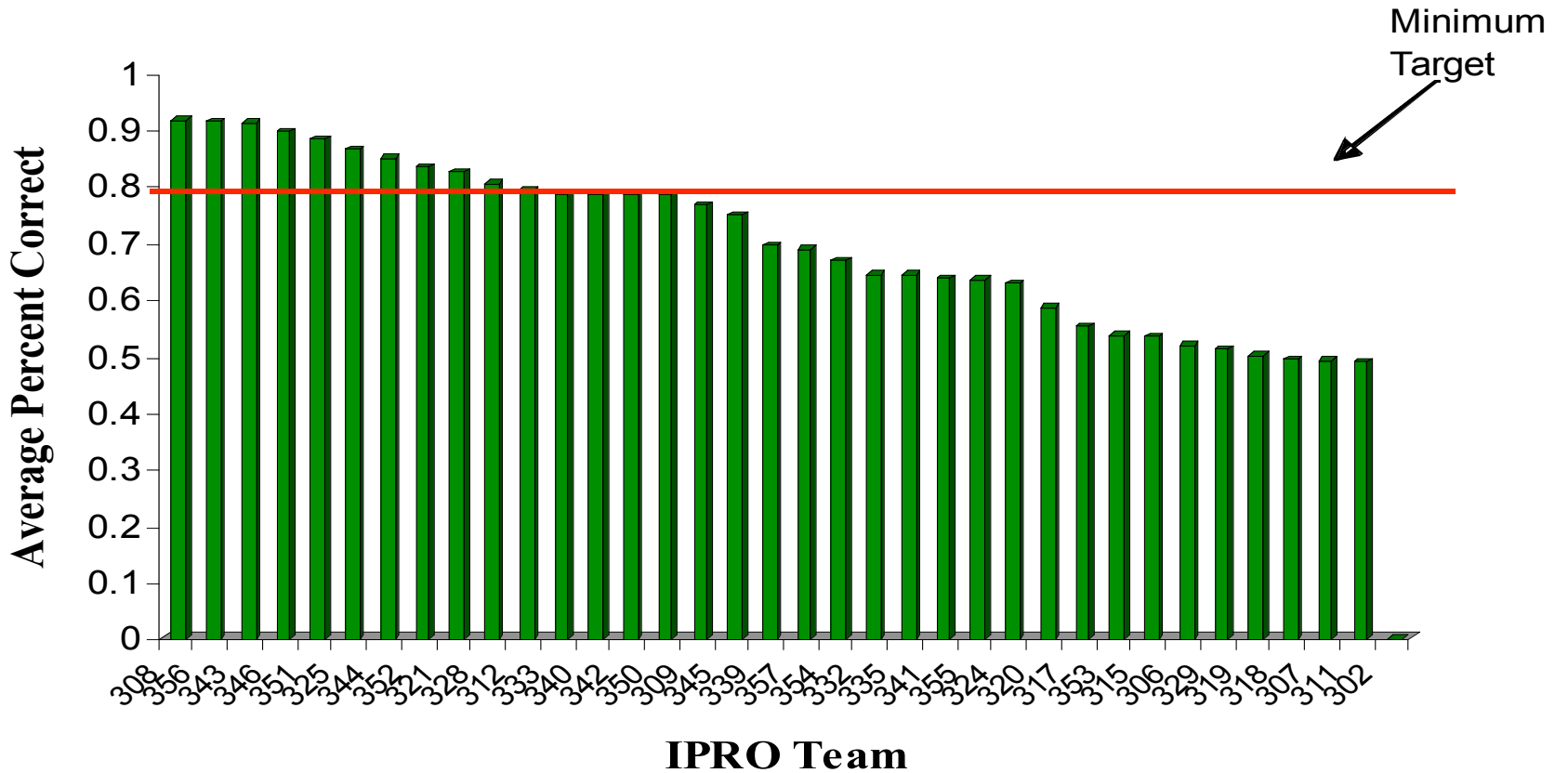


IPRO	LO Self Assessment Survey	LO Test Post - Test	Teamwork/ Trust Survey Time 2	IPRO Day	TEAMWORK Average
308	86.6%	91.5%	92.5%	95.0%	91.4%
350	86.3%	92.6%	88.5%	91.7%	89.8%
312	84.7%	86.7%	88.3%	92.5%	88.1%
343	85.9%	92.5%	91.0%	76.1%	86.4%
342	84.3%	81.3%	91.6%	87.3%	86.1%
309	87.5%	71.3%	89.0%	95.0%	85.7%
352	84.2%	80.0%	88.7%	90.0%	85.7%
325	83.5%	86.7%	81.8%	90.3%	85.6%
356	81.6%	92.0%	83.0%	84.2%	85.2%
339	85.0%	73.3%	87.8%	93.3%	84.9%
321	83.9%	82.2%	84.9%	87.5%	84.6%
354	87.8%	71.1%	89.0%	89.3%	84.3%
346	79.5%	86.7%	82.0%	87.5%	83.9%
357	82.4%	72.8%	87.2%	93.3%	83.9%
306	89.1%	61.7%	93.6%	91.3%	83.9%
319	87.3%	63.7%	89.8%	92.9%	83.4%
311	84.2%	57.1%	100.0%	91.5%	83.2%
340	84.4%	76.0%	78.9%	91.0%	82.6%
333	85.8%	83.3%	83.2%	77.8%	82.5%
345	86.3%	83.0%	79.0%	79.6%	82.0%
351	80.6%	84.4%	76.3%	86.2%	81.9%
335	82.1%	71.6%	88.3%	84.7%	81.7%
344	80.6%	81.7%	82.5%	80.6%	81.4%
307	83.6%	71.7%	82.8%	80.4%	79.6%
302	75.6%		77.5%	84.2%	79.1%
324	82.7%	60.5%	85.1%	88.0%	79.1%
329	78.3%	60.0%	87.2%	90.3%	79.0%
328	82.0%	83.3%	74.9%	75.5%	78.9%
355	72.5%	63.3%	81.3%	95.7%	78.2%
341	87.5%	50.4%	87.5%	85.8%	77.8%
315	77.9%	55.8%	83.7%	89.0%	76.6%
332		58.3%	87.5%	83.3%	76.4%
317	68.8%	64.2%	88.7%	78.1%	74.9%
353	78.9%	54.0%	80.8%	84.2%	74.5%
318	76.2%	56.7%	79.2%	81.7%	73.4%
320	77.5%	60.0%	78.7%	76.7%	73.2%

Fall 2006 Self Assessment Survey: Ethical Behavior

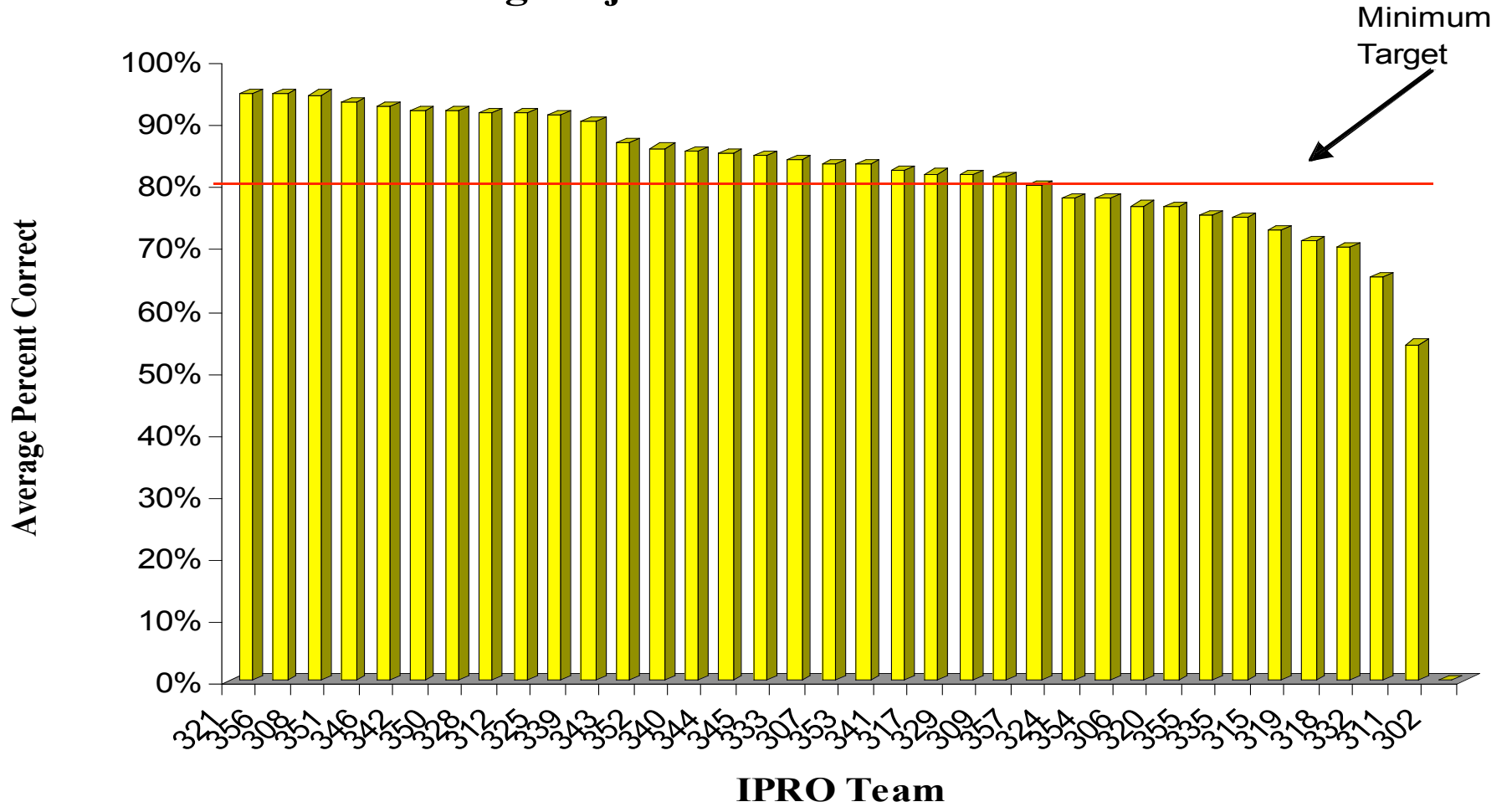


Fall 2006 Learning Objectives Post Test: Ethics



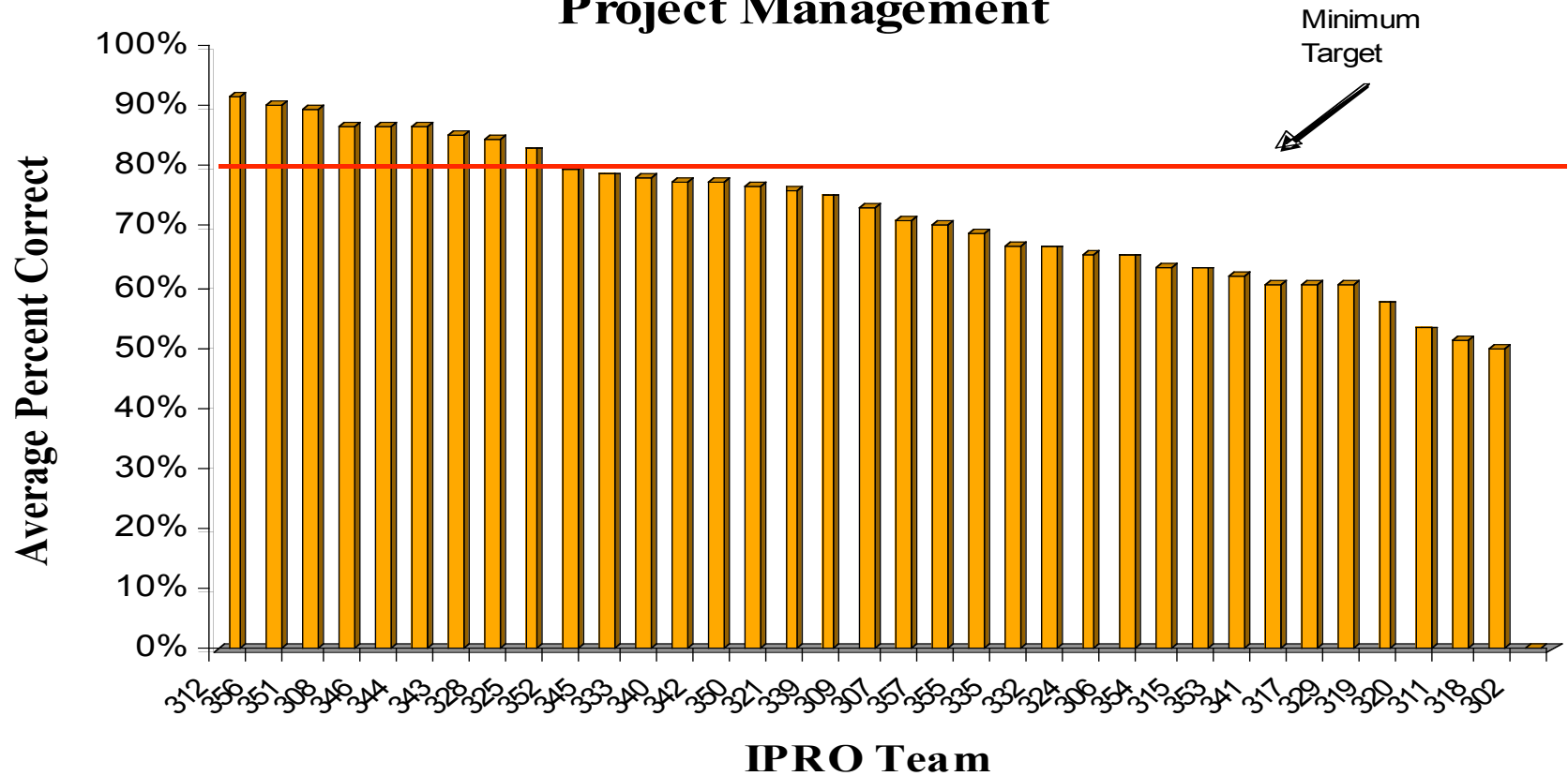
IPRO	LO Self Assessment Survey	LO Test Post -Test	IPRO Day	ETHICS Average
308	64.6%	91.6%	87.5%	81.2%
356	61.4%	91.4%	86.7%	79.8%
343	65.7%	91.1%	81.4%	79.4%
352	63.4%	83.3%	90.8%	79.2%
346	58.7%	89.7%	86.7%	78.3%
351	62.0%	88.1%	81.7%	77.3%
350	61.8%	78.6%	89.2%	76.5%
344	60.0%	84.8%	84.4%	76.4%
325	62.0%	86.5%	78.7%	75.7%
309	60.4%	76.4%	89.3%	75.4%
312	61.2%	79.2%	83.2%	74.5%
321	58.6%	82.5%	82.1%	74.4%
340	60.0%	78.6%	83.3%	73.9%
328	57.5%	80.4%	83.5%	73.8%
333	60.9%	78.6%	81.2%	73.5%
339	58.1%	69.5%	90.8%	72.8%
357	58.2%	68.7%	90.0%	72.3%
342	57.8%	78.6%	78.8%	71.7%
332		64.3%	78.3%	71.3%
341	63.1%	63.5%	86.2%	70.9%
355	59.1%	63.4%	88.6%	70.4%
345	54.1%	74.7%	82.1%	70.3%
306	62.5%	51.8%	95.4%	69.9%
354	60.2%	66.7%	82.3%	69.7%
302	56.4%		82.1%	69.2%
335	63.2%	64.3%	79.0%	68.8%
324	58.0%	62.6%	83.0%	67.9%
319	57.8%	50.0%	90.8%	66.2%
307	60.8%	49.1%	88.1%	66.0%
353	58.4%	53.6%	85.8%	65.9%
320	54.9%	58.4%	83.2%	65.5%
317	70.0%	55.2%	70.2%	65.1%
329	60.0%	51.2%	83.3%	64.8%
315	58.7%	53.2%	80.0%	64.0%
318	60.9%	49.3%	81.7%	64.0%
311	61.2%	49.0%	72.5%	60.9%

Fall 2006 Learning Objectives Post Test: Communications

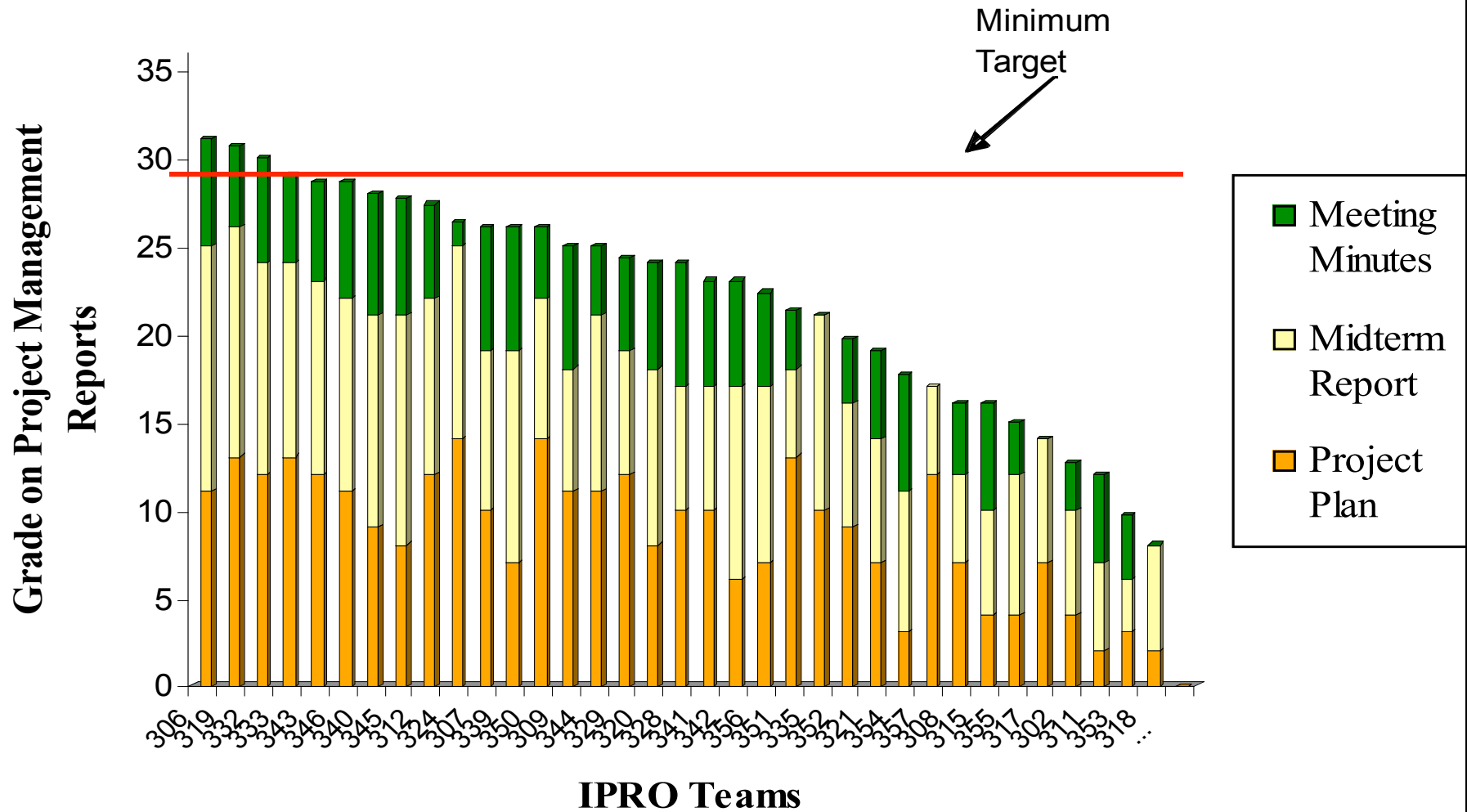


IPRO	LO Self Assessment Survey	LO Test Post -Test	IPRO Day	Communications Average
308	78.8%	94.5%	92.1%	88.5%
342	83.5%	92.0%	88.8%	88.1%
350	81.5%	91.9%	90.7%	88.0%
325	82.8%	91.1%	87.7%	87.2%
312	80.7%	91.5%	87.8%	86.6%
346	83.6%	92.6%	83.0%	86.4%
351	79.8%	93.3%	86.1%	86.4%
339	79.1%	90.3%	87.0%	85.5%
356	75.0%	94.7%	85.3%	85.0%
321	76.6%	94.8%	82.5%	84.6%
343	83.5%	86.7%	83.2%	84.4%
329	77.3%	81.7%	93.8%	84.3%
352	77.1%	85.9%	88.8%	83.9%
340	76.8%	85.3%	88.1%	83.4%
306	83.4%	76.7%	89.2%	83.1%
357	78.1%	80.0%	90.3%	82.8%
341	79.0%	82.2%	86.5%	82.6%
328	75.1%	91.7%	80.6%	82.5%
353	77.1%	83.3%	86.4%	82.3%
345	81.3%	84.8%	80.6%	82.2%
309	79.8%	81.3%	84.5%	81.9%
355	79.3%	75.0%	91.0%	81.7%
354	83.8%	77.8%	83.3%	81.6%
302	75.5%		87.1%	81.3%
333	80.0%	84.0%	79.6%	81.2%
307	76.7%	83.3%	82.1%	80.7%
344	76.9%	85.0%	80.2%	80.7%
319	82.2%	71.1%	87.3%	80.2%
335	79.7%	74.7%	81.1%	78.5%
320	74.9%	76.4%	82.1%	77.8%
324	72.4%	77.9%	80.8%	77.0%
317	71.0%	81.8%	76.0%	76.3%
318	76.2%	70.0%	81.7%	76.0%
315	74.6%	72.7%	80.5%	75.9%
311	81.1%	54.3%	88.1%	74.5%
332		65.0%	77.1%	71.0%

Fall 2006 Learning Objective Post Test: Project Management



Project Management Award Grading





It takes a team

INTERPROFESSIONAL PROJECTS PROGRAM

Fall 06

IPRO	LO Self Assessment Survey	LO Test Post - Test	IPRO	Project Management Award	PMGT Average
312	82.5%	91.6%	89.9%	75.9%	85.0%
306	91.9%	65.0%	92.8%	86.1%	84.0%
325	77.1%	82.7%	82.7%	88.9%	82.8%
343	83.1%	85.0%	80.8%	79.6%	82.1%
346	78.4%	86.7%	83.8%	79.6%	82.1%
350	80.0%	76.9%	94.2%	72.2%	80.8%
340	77.3%	77.6%	89.5%	77.8%	80.6%
319	85.1%	57.3%	92.2%	85.2%	79.9%
344	80.2%	86.5%	81.0%	69.4%	79.3%
339	76.4%	74.9%	93.5%	72.2%	79.3%
333	77.3%	78.4%	79.5%	80.6%	79.0%
345	80.0%	78.5%	78.5%	76.9%	78.5%
309	82.2%	73.2%	89.0%	69.4%	78.5%
342	82.4%	77.6%	88.9%	63.9%	78.2%
324	84.2%	65.5%	87.5%	73.1%	77.6%
352	82.0%	79.6%	93.3%	54.9%	77.4%
332		66.5%	82.2%	83.3%	77.3%
356	74.2%	90.4%	80.8%	62.0%	76.9%
328	77.6%	84.3%	77.6%	66.7%	76.5%
308	81.9%	86.9%	88.8%	44.4%	75.5%
307	77.1%	71.0%	80.6%	72.2%	75.2%
351	63.4%	89.3%	87.1%	59.3%	74.8 %
329	77.8%	60.3%	91.8%	67.6%	74.4%
341	83.1%	60.4%	83.5%	63.9%	72.7%
321	78.9%	76.0%	82.3%	52.8%	72.5%
357	80.2%	70.2%	89.2%	47.2%	71.7%
354	81.1%	63.1%	92.5%	49.1%	71.5%
335	76.9%	66.9%	81.5%	58.3%	70.9%
355	78.1%	69.0%	89.3%	41.7%	69.5%
320	72.9 %	53.1%	82.9%	66.7%	68.9%
315	74.5%	62.9%	89.0%	44.4%	67.7%
302	73.9%		85.2%	35.2%	64.8%
311	74.8%	51.4%	89.9%	33.3%	62.4%
353	73.7%	62.0%	85.0%	26.8%	61.9%
317	67.8%	60.4%	78.7%	38.9%	61.4%
318	69.9%	50.0%	84.9%	22.2%	56.8%

Y

Conclusions from Fall 06 LO analysis

- Ethics and Project Management are areas where we were clearly not meeting our learning objective goals at the team level
- Non compliance was an issue with the new requirements in project management

Pass out guidelines and grading criteria and return graded PMGT team deliverables more promptly

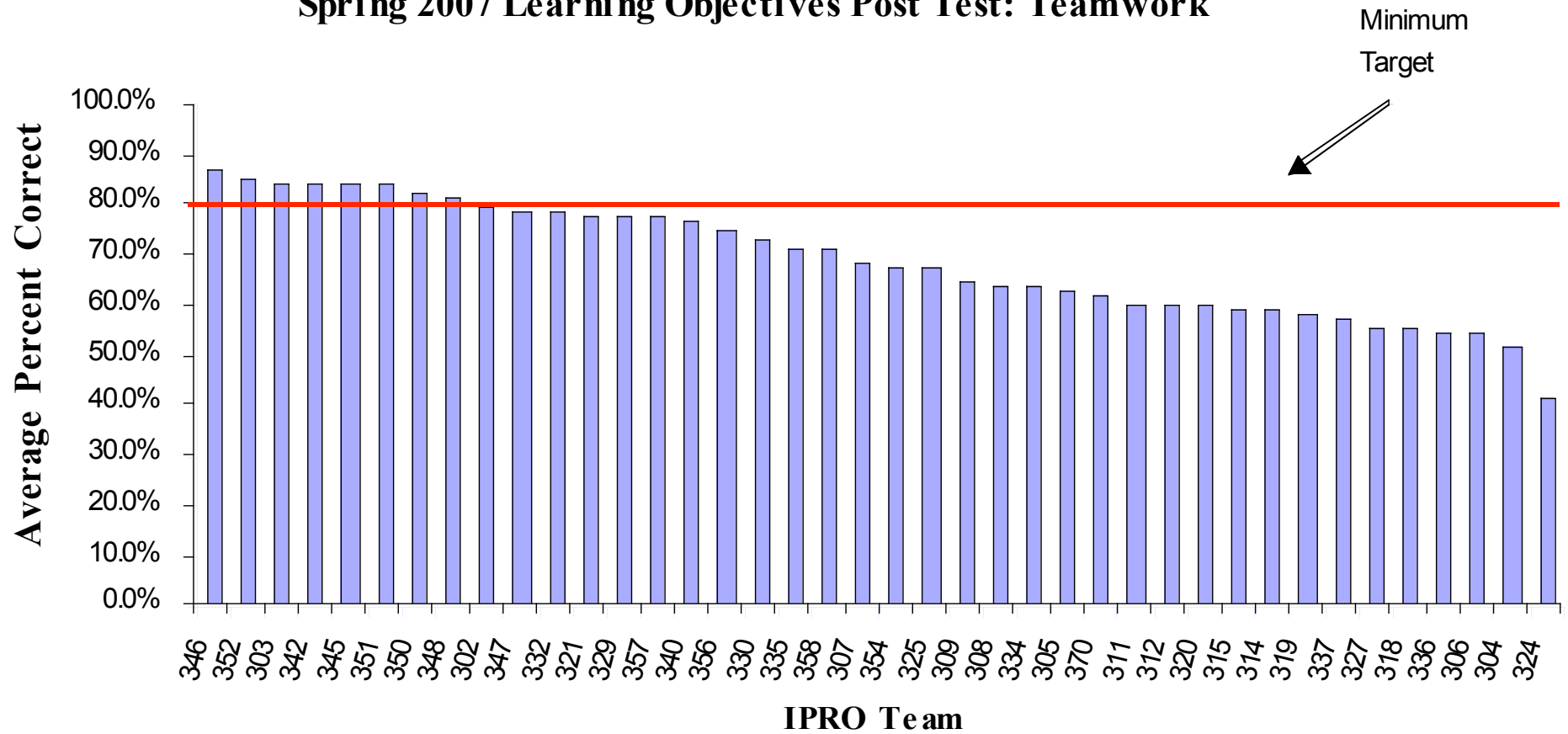
Post examples of required PMGT deliverables in iGROUPS



It takes a team

INTERPROFESSIONAL PROJECTS PROGRAM

Spring 2007 Learning Objectives Post Test: Teamwork



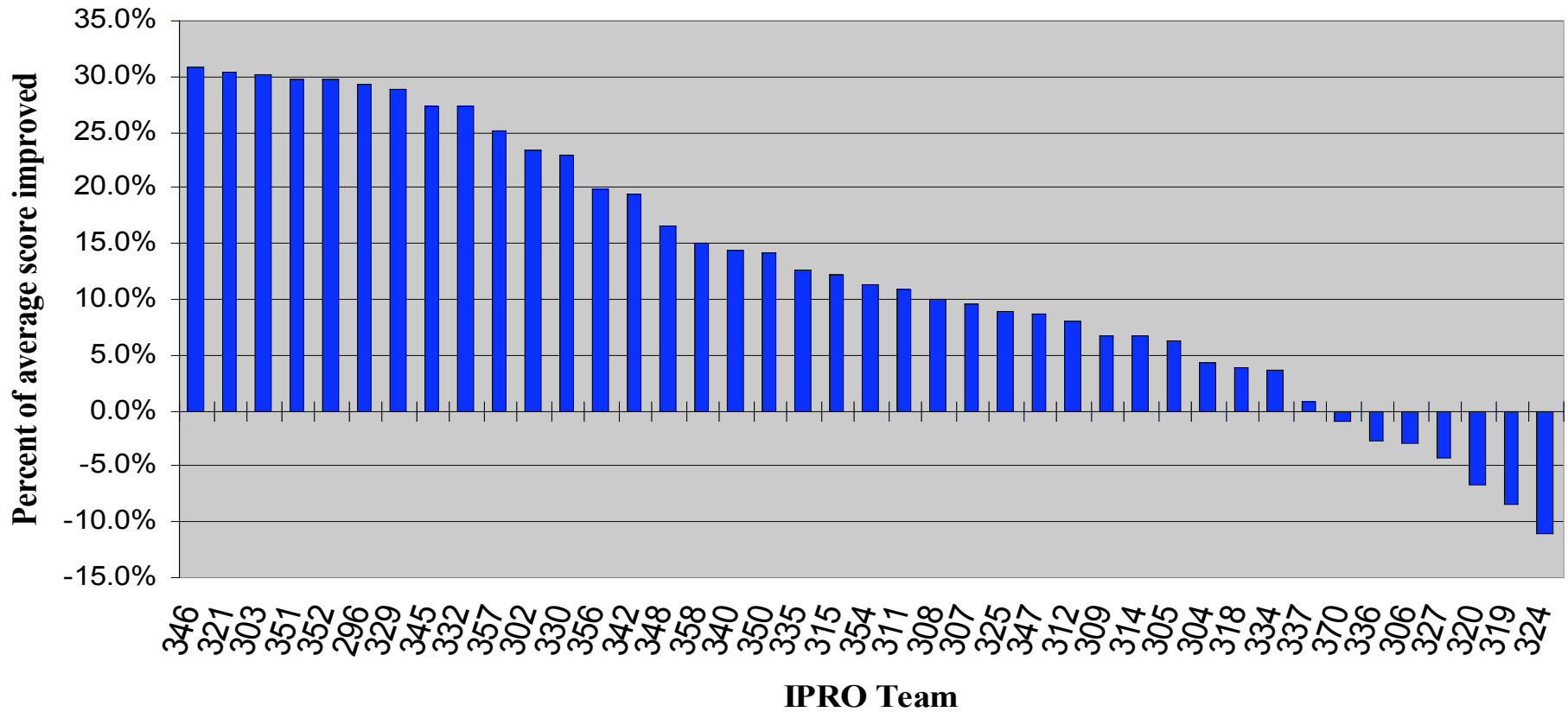


It takes a team

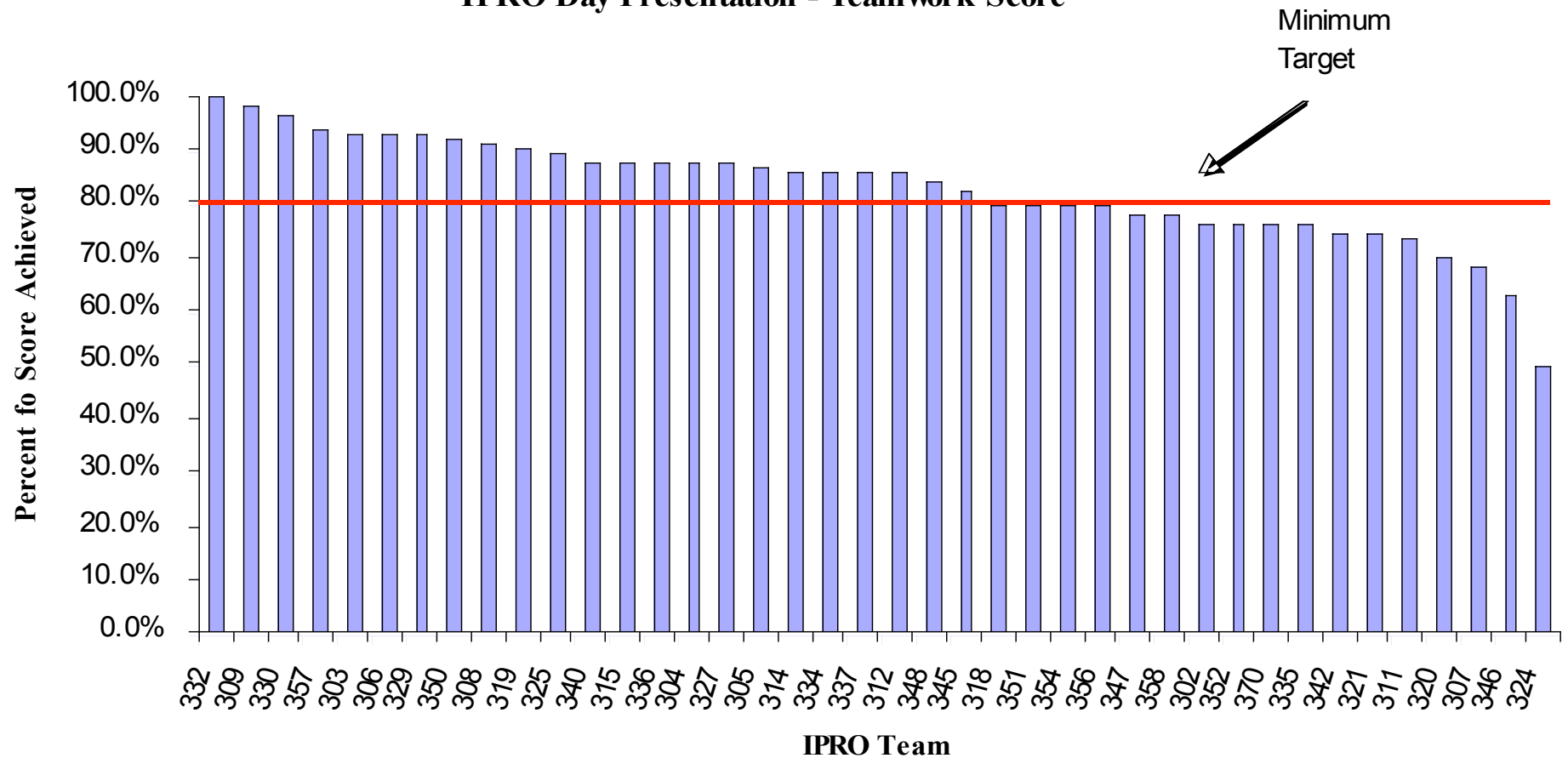
INTERPROFESSIONAL PROJECTS PROGRAM

Spring 07

Difference Between Learning Objective Tests:Teamwork



I PRO Day Presentation - Teamwork Score

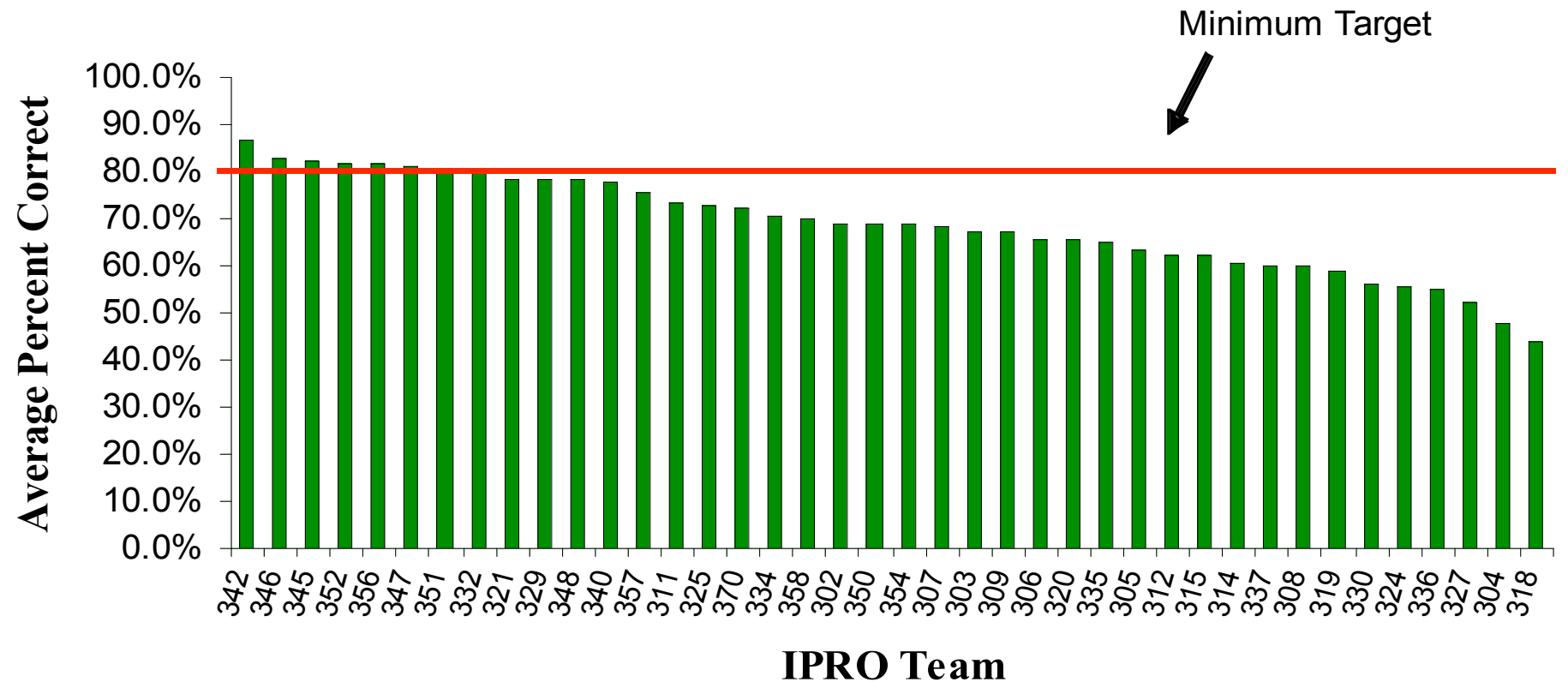


IPRO	LO Self Assessment Survey	LO Test Post -Test	Teamwork/ Trust Survey Time 2	IPRO Day	Average
332	86.6%	78.9%	95.7%	94.6 %	89.0%
345	86.2%	84.4%	82.1%	93.8%	86.6%
303	86.6%	84.7%	85.8%	86.2%	85.8%
321	91.4%	78.0%	80.4%	92.6%	85.6%
309	88.6%	65.3%	94.2%	93.0%	85.3%
329	85.0%	77.8%	89.6%	87.4%	84.9%
342	92.6%	84.7%	70.6%	91.8%	84.9%
346	84.2%	87.5%	78.3%	87.0%	84.3%
30 2	83.8%	80.0%	82.7%	89.8%	84.1%
330	83.8%	73.3%	91.8%	87.0%	84.0%
306	93.6%	54.3%	89.6%	97.8%	83.8%
348	78.6%	81.3%	87.5%	84.4%	83.0%
357	83.4%	77.8%	84.0%	86.0%	82.8%
340	82.8%	77.2%	82.9%	84.2%	81.8%
356	81.6%	75.3%	86.0%	82.6%	81.4%
352	82.8%	85. 7%	80.4%	74.8%	80.9%
351	82.6%	84.2%	73.5%	83.2%	80.9%
335	85.4%	71.7%	81.0%	85.2%	80.8%
350	77.6%	82.5%	83.0%	77.4%	80.1%
311	85.8%	60.0%	82.3%	89.8%	79.5%
334	86.2%	64.2%	92.5%	74.8%	79.4%
327	85.8%	55.8%	88.1%	87.0%	79.2%
354	84.8%	67.5%	81.3%	82.6%	79.0%
347	74.8%	79.3%	80.4%	81.4%	79.0%
315	80.6%	59.6%	91.0%	81.0%	78.1%
337	84.4%	57.2%	85.0%	85.4%	78.0%
325	81.0%	67.3%	86.3%	77.4%	78.0%
336	84.2%	54.5%	86.0%	83.4%	77.0%
319	82.6%	58.3%	81.8%	84.2%	76.7%
308	79.2%	64.2%	84.6%	77.8%	76.5%
307	83.2%	68.3%	71.6%	82.0%	76.3%
358	79.0%	71.3%	72.0%	82.2%	76.1%
305	77.0%	63.0%	84.2%	79.2%	75.8%
318	83.8%	55.2%	77.3%	85.0%	75.3%
370	76.8%	62.0%	79.6%	81.2%	74.9%
320	83.4%	60.0%	72.5%	82.0%	74.5%
314	77.4%	59.4%	83.8%	76.2%	74.2%
312	80.8%	60.0%	69.4%	78.0%	72.0%
324	85.2%	41.7%	62.5%	88.6%	69.5%
304*	89.2%	51.7%	N/A	88.8%	N/A

Y

- **Teamwork** continues to be a vexing problem in moving most, if not all, teams to a performing level as only 59% of the spring teams reached the 80% level vs. 77% of the fall 06 teams.
- Fall 07 we introduced a mandatory midterm presentation to attempt to ferret out low performing teams earlier in the semester.
- Graduating seniors, too large team size and the quality of the problem appear to be the central issues to address relative to spring term team performance.

Spring 2007 Learning Objectives Post Test: Ethics



I PRO Day Presentation - Ethics Score





It takes a team

INTERPROFESSIONAL PROJECTS PROGRAM

Spring 07

IPRO	LO Self Assessment Survey	LO Test Post -Test	IPRO Day	Average
332	85.6%	79.8%	95.7%	87.0%
309	92.2%	67.1%	94.2%	84.5%
306	97.2%	65.3%	89.6%	84.0%
334	88.4%	70.8%	92.5%	83.9%
346	88.2%	83.0%	78.3%	83.2%
340	89.0%	77.6%	82.9%	83.2%
356	81.8%	81.4%	86.0%	83.1%
329	80.6%	78.6%	89.6%	82.9%
348	81.8%	78.6%	87.5%	82.6%
311	90.0%	73.2%	82.3%	81.8%
342	88.2%	86.4%	70.6%	81.8%
354	95.2%	68.8%	81.3%	81.7%
321	85.8%	78.6%	80.4%	81.6%
352	80.8%	81.6%	80.4%	81.0%
347	81.0%	81.0%	80.4%	80.8%
303	89.2%	67.1%	85.8%	80.7%
345	77.8%	82.1%	82.1%	80.7%
325	81.4%	72.9%	86.3%	80.2%
302	86.8%	69.0%	82.7%	79.5%
351	84.2%	80.4%	73.5%	79.4%
357	77.2%	75.4%	84.0%	78.9%
315	80.4%	62.2%	91.0%	77.9%
314	87.2%	60.7%	83.8%	77.2%
335	85.2%	65.2%	81.0%	77.1%
358	89.0%	70.0%	72.0%	77.0%
350	79.2%	68.8%	83.0%	77.0%
337	85.8%	60.1%	85.0%	77.0%
330	81.0%	56.0%	91.8%	76.2%
370	77.0%	72.1%	79.6%	76.2%
305	80.4%	63.5%	84.2%	76.0%
307	87.2%	68.5%	71.6%	75.7%
327	84.2%	52.3%	88.1%	74.9%
308	80.0%	59.7%	84.6%	74.8%
319	80.2%	58.9%	81.8%	73.6%
336	77.8%	55.2%	86.0%	73.0%
312	86.0%	62.2%	69.4%	72.5%
320	76.2%	65.3%	72.5%	71.3%
318	88.4%	43.9%	77.3%	69.9%
324	85.0%	55.4%	62.5%	67.6%
304 *	89.6%	47.8%	N/A	68.7%

Y

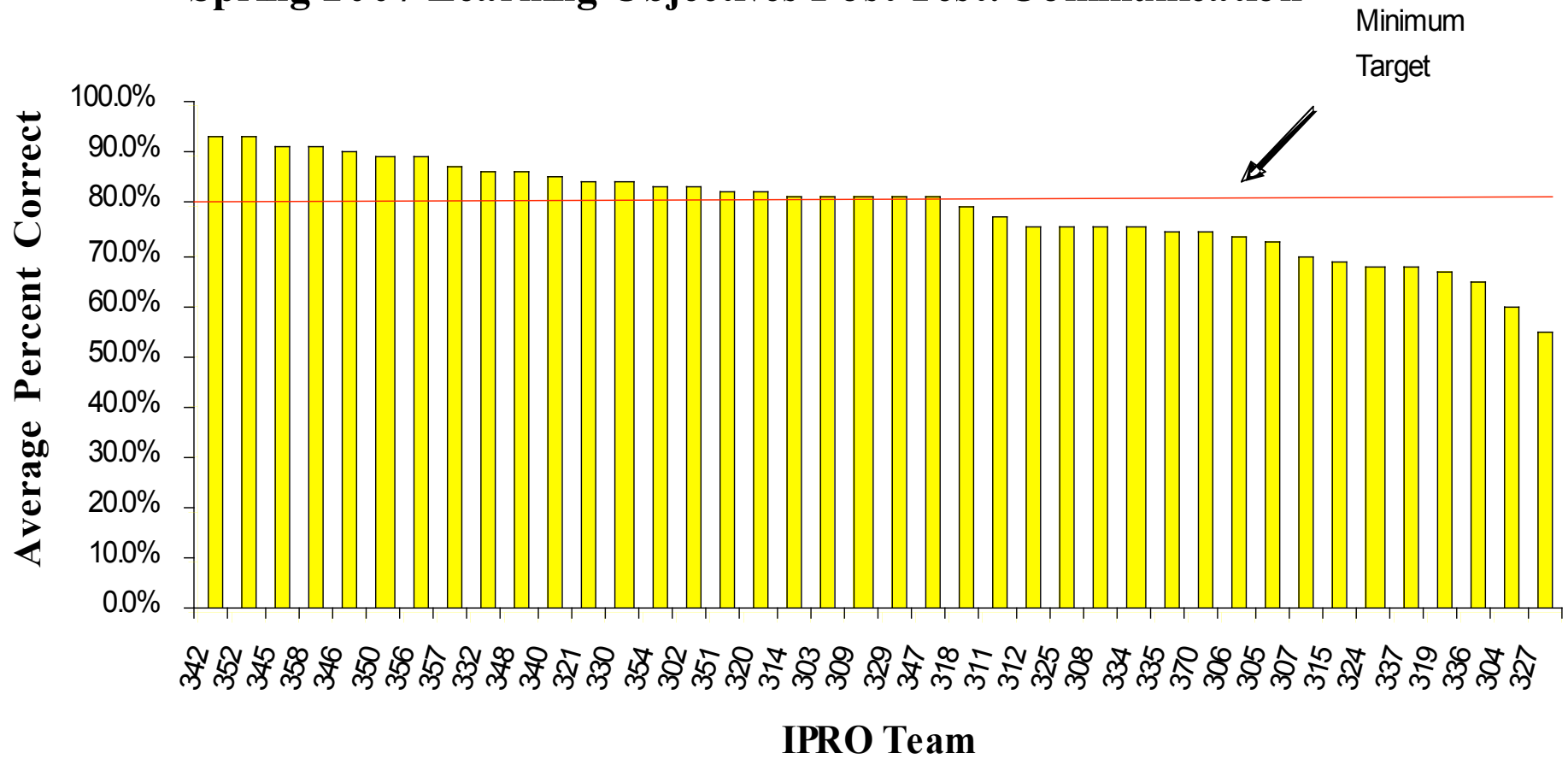
- **Ethics Awareness** remains an unmet learning objective for most students on most assessment measures.
- Only 53% of the teams met the minimum standard in the spring.
- All previous ethics BOK materials discarded and a complete new approach focused on producing a code of ethics specific to the team's problem, a new ethics text, an ethics seminar and team grading of the code of ethics piloted in the summer 07 and rolled out to all teams in fall 07.



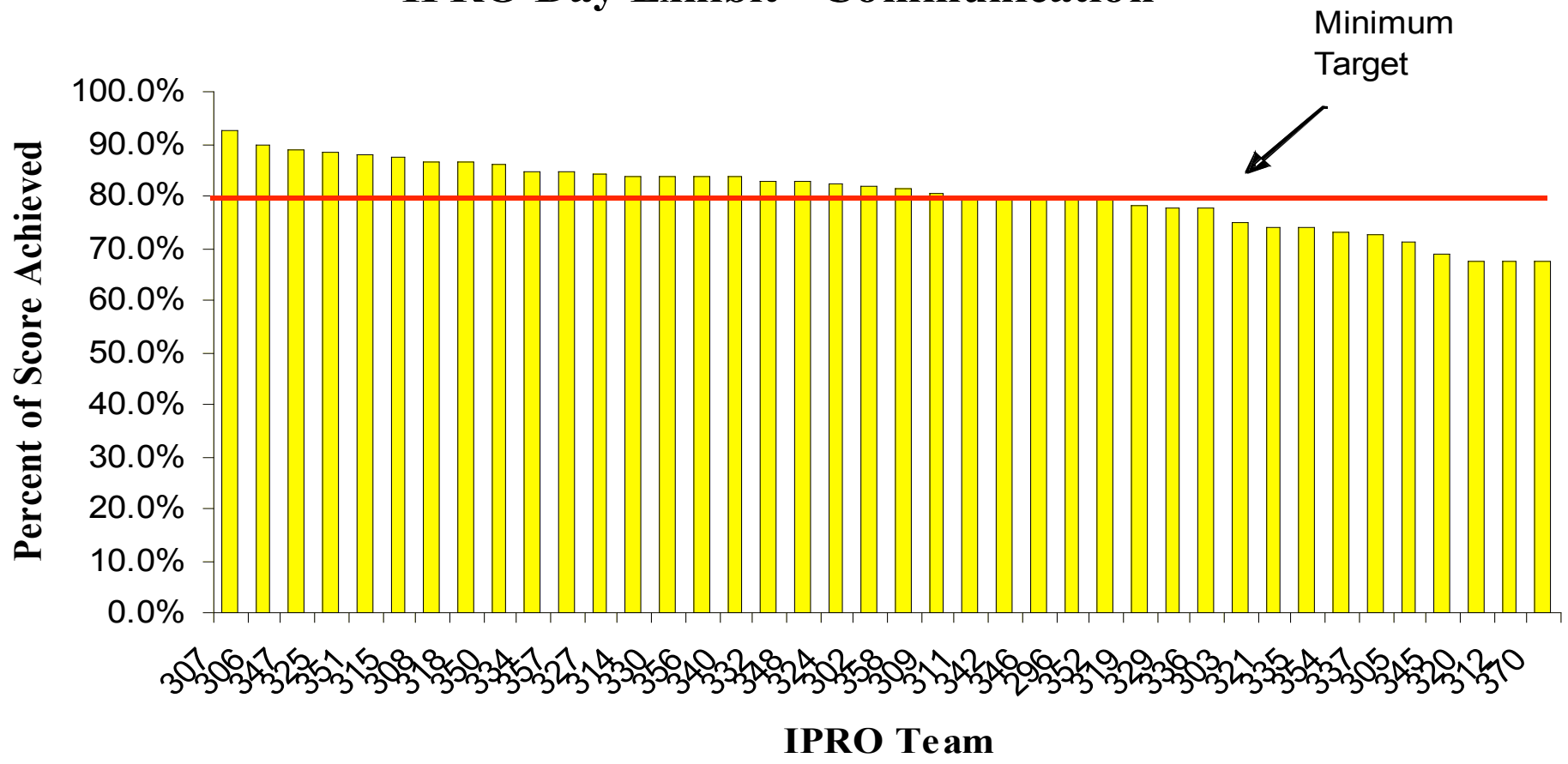
It takes a team

INTERPROFESSIONAL PROJECTS PROGRAM

Spring 2007 Learning Objectives Post Test: Communication



I PRO Day Exhibit - Communication



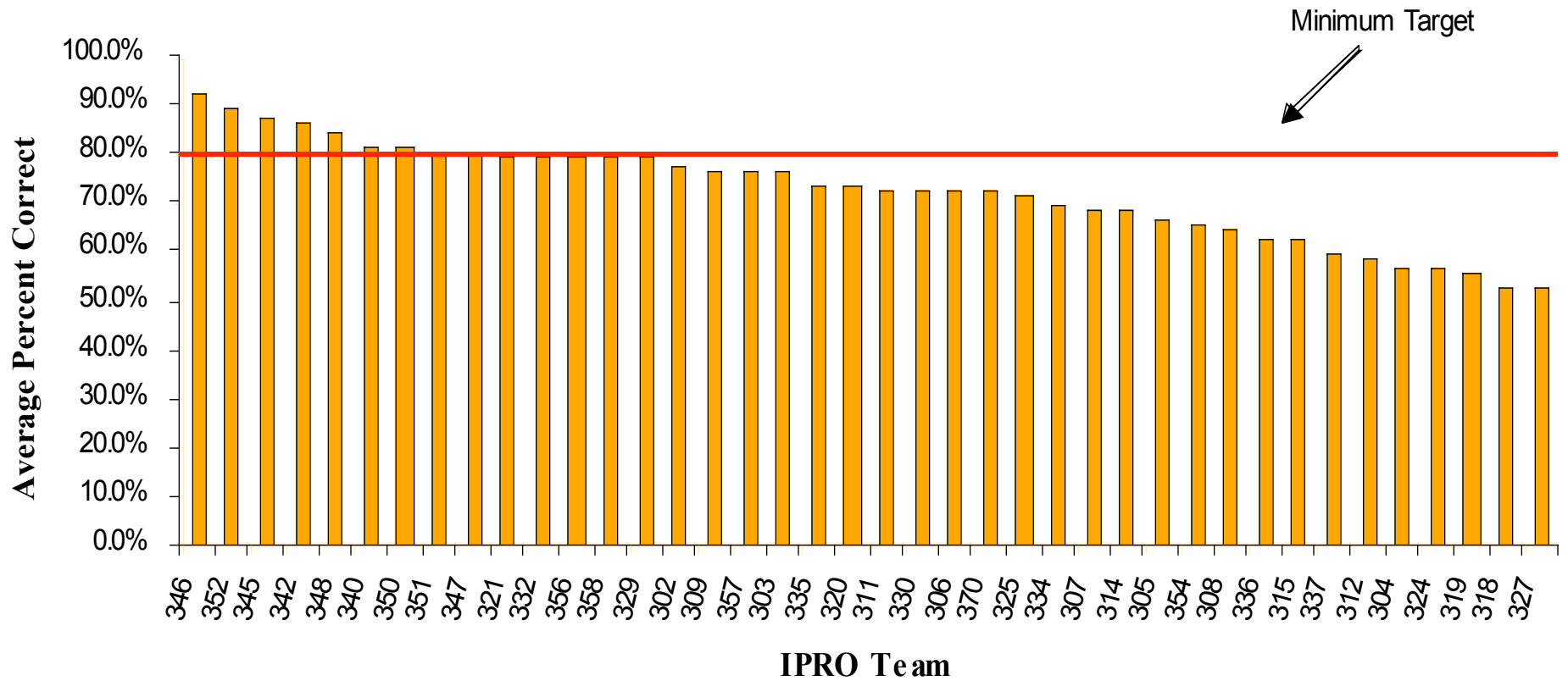
IPRO	LO Self Assessment Survey	LO Test Post -Test	IPRO Day	Average
332	88.0%	86.7%	95.7%	90.1%
309	85.2%	82.0%	94.2%	87.1%
345	85.4%	92.2%	82.1%	86.6%
330	79.8%	84.4%	91.8%	85.3%
356	79.8%	90.0%	86.0%	85.3%
348	81.6%	86.7%	87.5%	85.3%
352	80.2%	93.3%	80.4%	84.7%
342	89.8%	93.3%	70.6%	84.6%
303	84.8%	82.0%	85.8%	84.2%
350	79.2%	90.0%	83.0%	84.1%
346	82.6%	90.8%	78.3%	83.9%
306	87.6%	74.3%	89.6%	83.8%
321	85.2%	85.3%	80.4%	83.6%
357	78.0%	88.1%	84.0%	83.4%
302	82.6%	83.9%	82.7%	83.1%
340	80.0%	85.7%	82.9%	82.9%
354	82.8%	84.2%	81.3%	82.7%
334	79.6%	75.8%	92.5%	82.6%
329	76.2%	81.5%	89.6%	82.4%
311	86.2%	77.8%	82.3%	82.1%
351	88.0%	83.3%	73.5%	81.6%
314	76.8%	82.2%	83.8%	80.9%
347	80.4%	81.5%	80.4%	80.7%
358	76.8%	92.0%	72.0%	80.3%
315	80.4%	68.6%	91.0%	80.0%
318	81.8%	80.0%	77.3%	79.7%
305	80.8%	73.3%	84.2%	79.4%
325	75.8%	76.0%	86.3%	79.4%
335	81.8%	75.0%	81.0%	79.3%
308	77.2%	75.8%	84.6%	79.2%
337	83.0%	68.3%	85.0 %	78.8%
336	83.8%	64.8%	86.0%	78.2%
320	79.2%	82.9%	72.5%	78.2%
370	74.6%	74.7%	79.6%	76.3%
319	79.0%	66.7%	81.8%	75.8%
327	84.0%	54.7%	88.1%	75.6%
307	83.6%	70.0%	71.6%	75.1%
312	70.0%	76.2%	69.4%	71.9%
324	80.4%	68.3%	62.5%	70.4%
304*	86.4%	60.0 %	N/A	N/A

- **Effective team communication** is the one learning objective where the IPRO Program is closest to meeting the minimum mean target however individual presentation skills are sometimes poor. Solution: new workshop

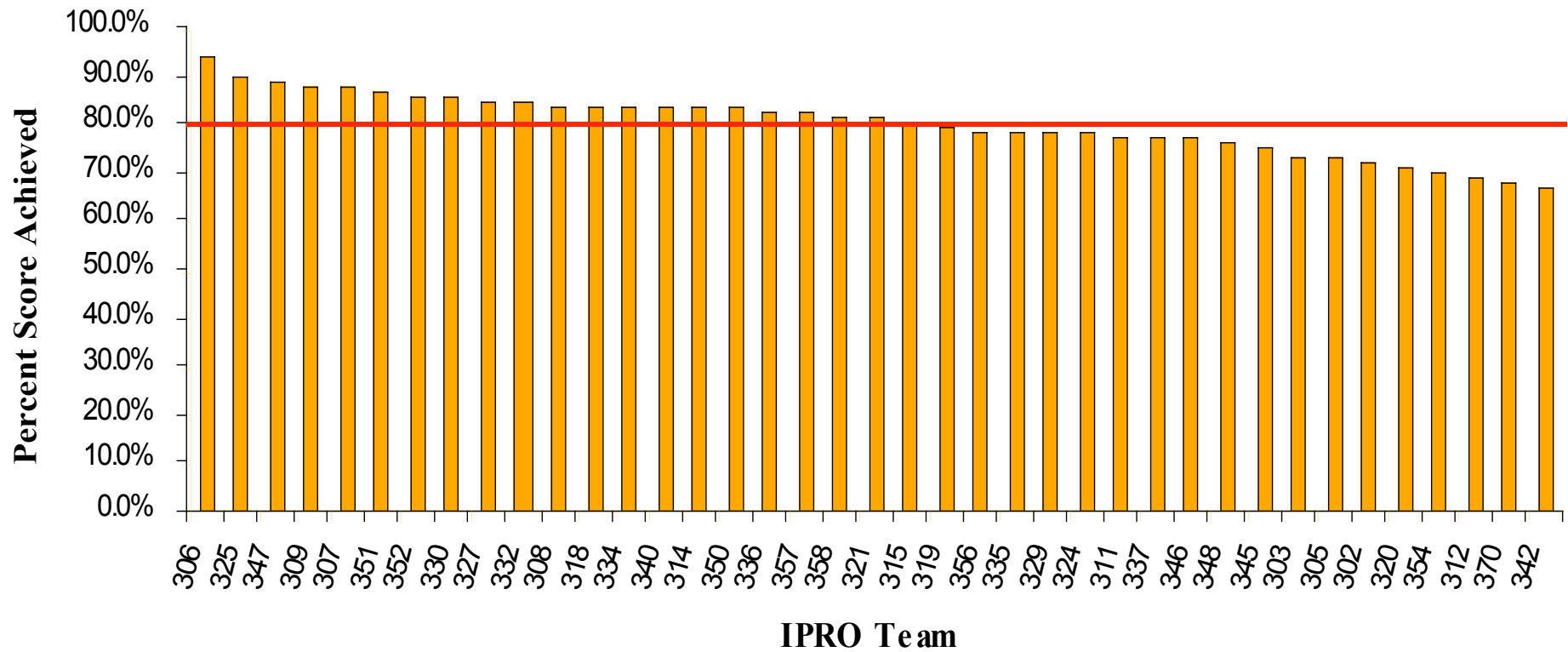
Comparison Between Semesters - Communication

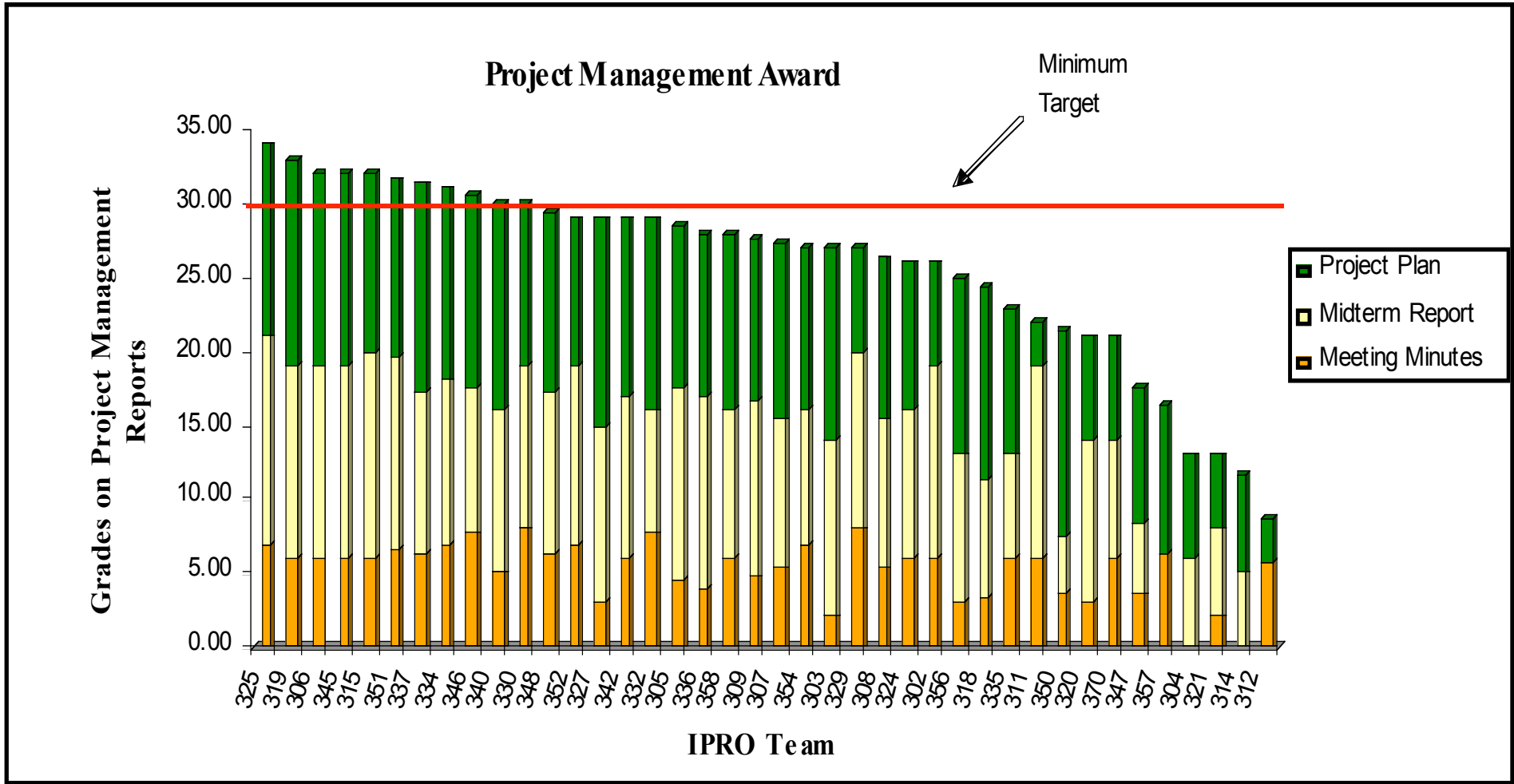
	Fall	Spring
Self-Assessment Mean	78.6%	81.5%
LO Post test Mean	83.0%	79.6%
LO Test Pre -Post Difference Mean	23.5%	24.2%
IPRO Day Mean	85.0%	82.2%
Overall Percentage of Teams Who Achieved the Learning Objective	77.0%	79.4%

Spring 2007 Learning Objectives Post Test: Project Management



I PRO Day Exhibit - Project Management







It takes a team

INTERPROFESSIONAL PROJECTS PROGRAM

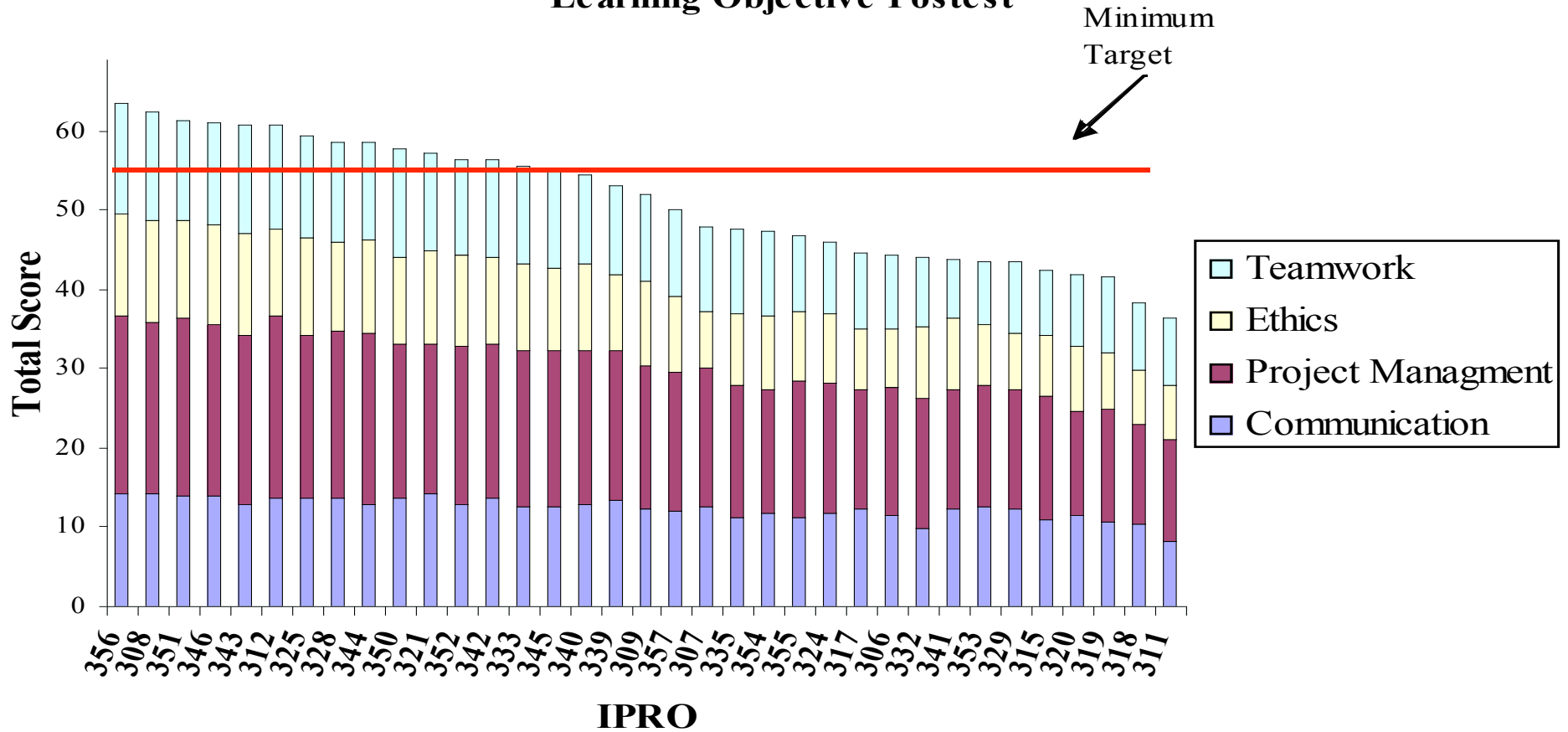
Spring 07

IPRO	LO Self Assessment Survey	LO Test Post -Test	IPRO Day	Project Management Award	Average
306	94.4%	72.6%	91.9%	86.9%	86.4%
346	82.2%	93.0%	80.6%	86.7%	85.6%
345	83.6%	88.0%	81.8%	86.9%	85.1%
352	82.0%	90.3%	85.8%	81.5%	84.9%
332	84.8%	80.0%	90.5%	82.6%	84.5%
351	78.0%	80.5%	87.1%	87.3%	83.2%
330	82.0%	73.3%	90.2%	85.7%	82.8%
325	76.6%	71.6%	85.9%	93.5%	81.9%
309	84.2%	77.2%	90.5%	74.2%	81.5%
342	89.8%	87.2%	69.4%	79.8%	81.5%
340	76.2%	81.7%	87.2%	80.4%	81.4%
348	76.2%	85.2%	80.0%	81.1%	80.6%
329	78.6%	79.6%	85.3%	78.6%	80.5%
334	78.0%	69.8%	83.3%	86.3%	79.3%
315	80.4%	63.1%	86.0%	86.9%	79.1%
358	73.6%	79.6%	82.2%	77.4%	78.2%
303	84.8%	76.4%	79.6%	67.9%	77.2%
307	82.4%	69.0%	80.8%	74.6%	76.7%
319	79.0%	56.0%	81.9%	89.3%	76.5%
337	76.2%	60.0%	82.7%	85.9%	76.2%
302	80.6%	77.7%	73.3%	72.6%	76.0%
336	80.4%	63.3%	84.2%	73.8%	75.4%
356	77.4%	80.0%	79.2%	64.9%	75.4%
350	77.8%	81.5%	83.8%	57.6%	75.2%
335	76.6%	74.3%	82.3%	65.5%	74.6%
311	83.8%	73.3%	78.2%	63.1%	74.6%
327	81.6%	52.6%	89.0%	74.4%	74.4%
305	75.2%	66.7%	78.5%	75.9%	74.1%
308	77.6%	65.1%	80.4%	72.2%	73.8%
347	76.6%	80.4%	85.3%	47.9%	72.6%
354	77.2%	66.0%	70.0%	76.8%	72.5%
357	76.8%	76.9%	82.8%	50.2%	71.7%
370	75.2%	72.4%	74.6%	60.7%	70.7%
324	77.6%	56.7%	74.1%	72.6%	70.2%
318	76.6%	53.1%	82.1%	63.9%	68.9%
321	79.2%	80.0%	79.9 %	34.5%	68.4%
320	73.6%	73.7%	70.6%	55.4%	68.3%
314	67.8%	69.0%	80.4%	28.0%	61.3%
312	70.6%	59.4%	66.4%	30.7%	56.8%
304*	81.4%	57.0%	N/A	31.0%	N/A

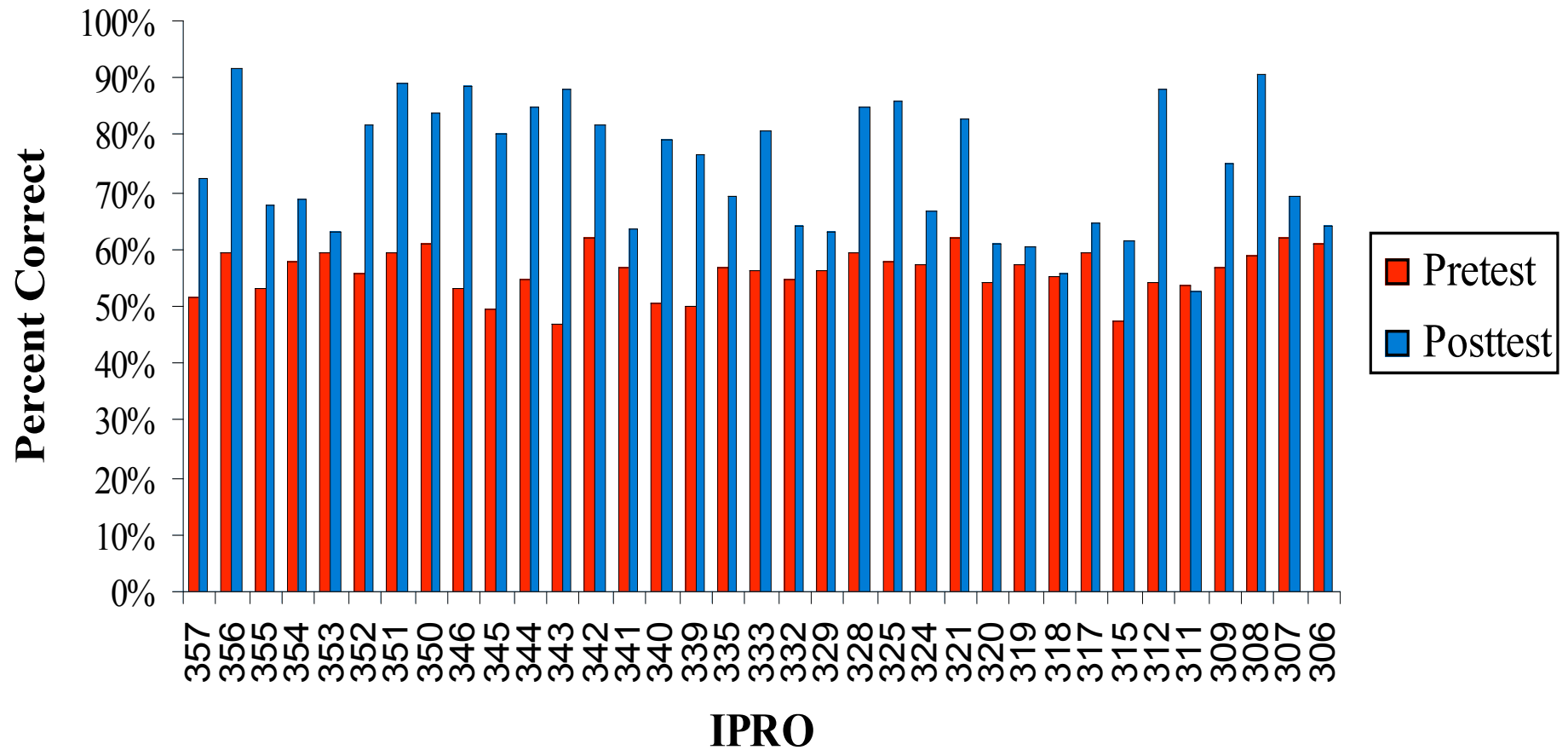
- The Practice of Project Management shows significant improvement fall 06 to spring 07 but only 37% of spring 07 teams met the minimum Project Management standard
- Improvement Strategies employed fall 07:
 - upgrade the PMGT workshop
 - videotape the PMGT lectures for IPRO website

- **I PRO Program Assessment** is based upon these measures:
- Learning Objectives Test Results
- Learning Objectives Self Assessment
- Course Evaluations
- I PRO Day Judges Scores

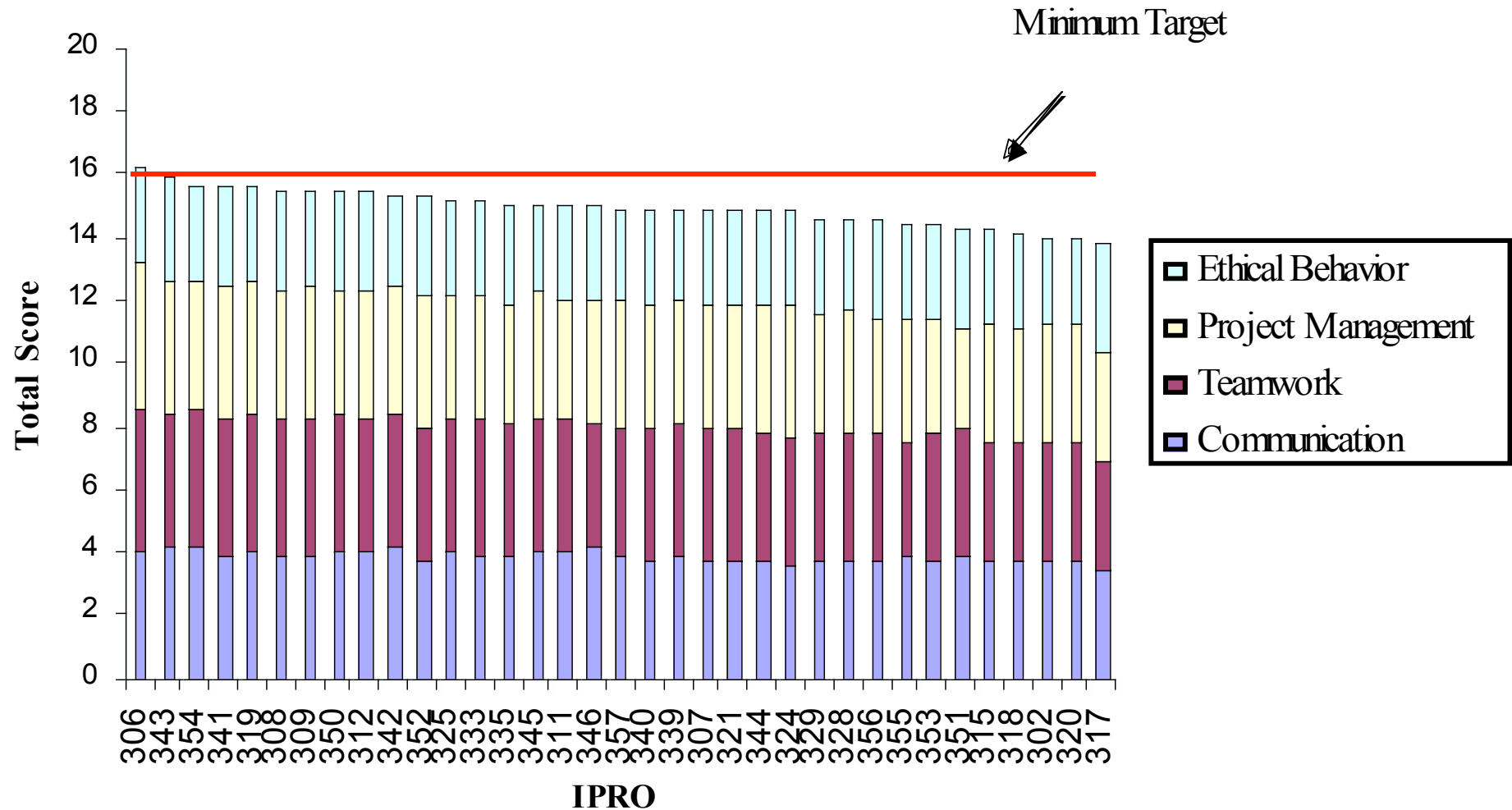
Learning Objective Posttest



Difference Between Pretest and Posttest

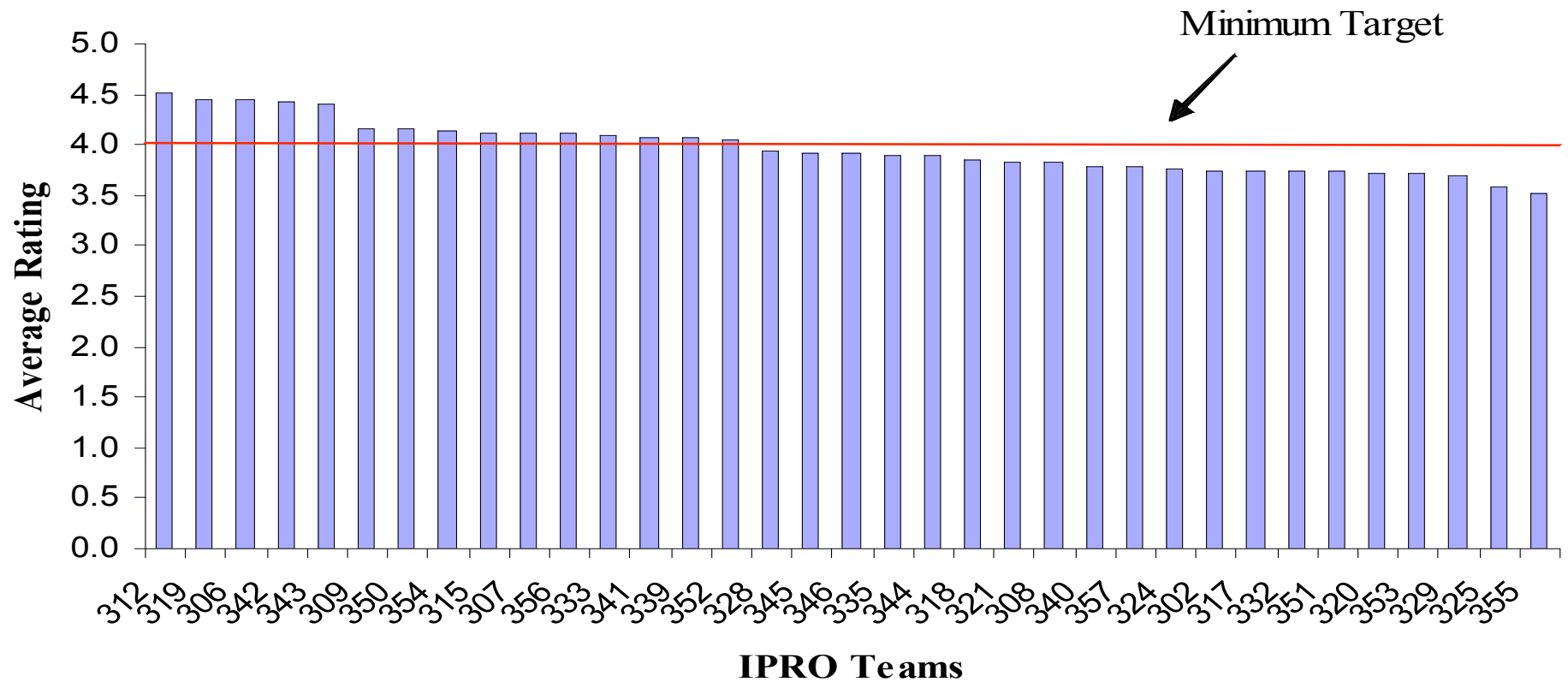


Learning Objective Self Assessment

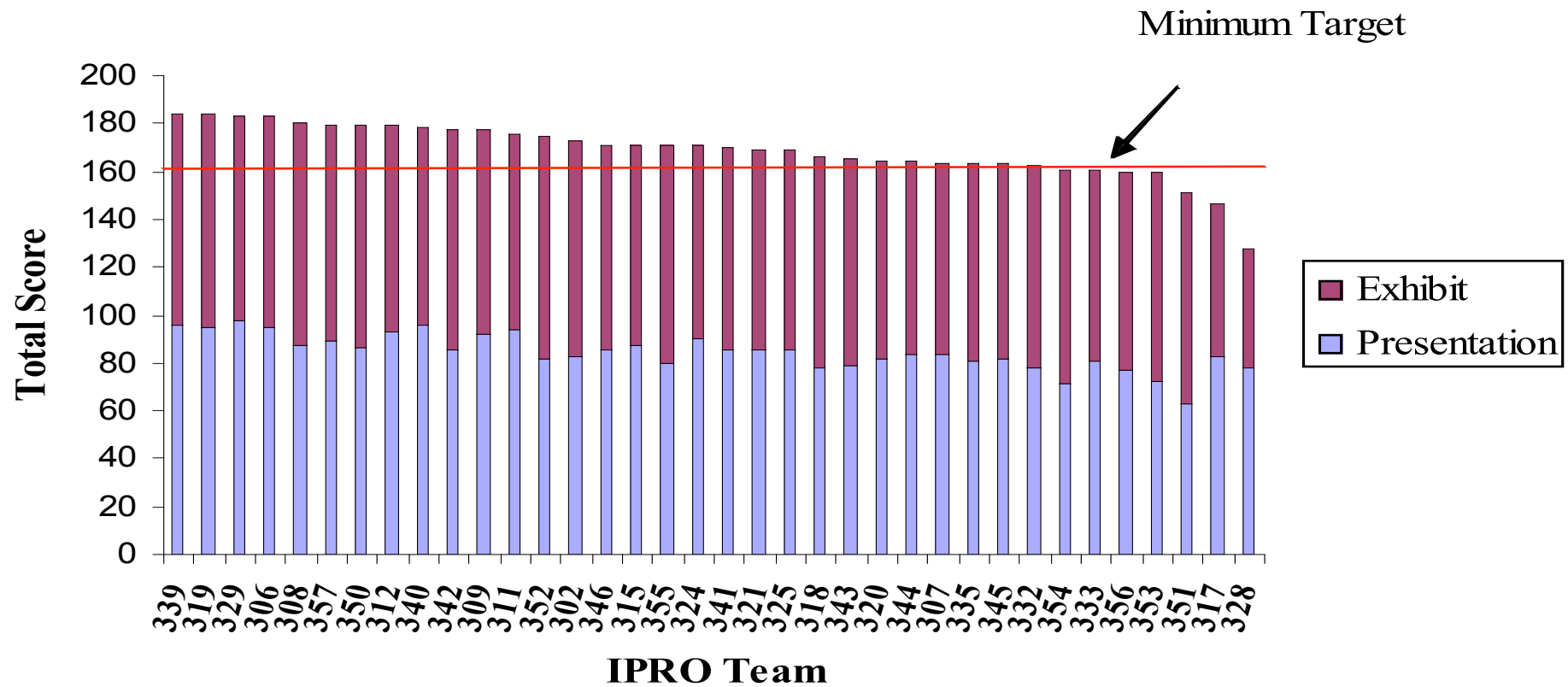


IPRO	Communication	Teamwork	Project Management	Ethical Behavior	Total Average
302	3.78	3.78	3.69	2.82	3.52
306	4.17	4.45	4.60	3.13	4.09
307	3.84	4.18	3.86	3.04	3.73
308	3.94	4.33	4.09	3.23	3.90
309	3.99	4.38	4.11	3.02	3.87
311	4.06	4.21	3.74	3.06	3.77
312	4.03	4.24	4.12	3.06	3.86
315	3.73	3.89	3.72	2.94	3.57
317	3.55	3.44	3.39	3.50	3.47
318	3.81	3.81	3.50	3.05	3.54
319	4.11	4.36	4.26	2.89	3.90
320	3.74	3.88	3.65	2.74	3.50
321	3.83	4.19	3.94	2.93	3.72
324	3.62	4.14	4.21	2.90	3.72
325	4.14	4.18	3.86	3.10	3.82
328	3.76	4.10	3.88	2.87	3.65
329	3.87	3.92	3.89	3.00	3.67
333	4.00	4.29	3.87	3.05	3.80
335	3.98	4.11	3.85	3.16	3.77
339	3.95	4.25	3.82	2.90	3.73
340	3.84	4.22	3.87	3.00	3.73
341	3.95	4.38	4.15	3.15	3.91
342	4.18	4.21	4.12	2.89	3.85
343	4.18	4.30	4.15	3.28	3.98
344	3.84	4.03	4.01	3.00	3.72
345	4.07	4.31	4.00	2.70	3.77
346	4.18	3.98	3.92	2.93	3.75
350	4.08	4.31	4.00	3.09	3.87
351	3.99	4.03	3.17	3.10	3.57
352	3.86	4.21	4.10	3.17	3.83
353	3.86	3.95	3.68	2.92	3.60
354	4.19	4.39	4.06	3.01	3.91
355	3.96	3.63	3.90	2.95	3.61
356	3.75	4.08	3.71	3.07	3.65
357	3.91	4.12	4.01	2.91	3.74
Average	3.93	4.12	3.91	3.02	3.75

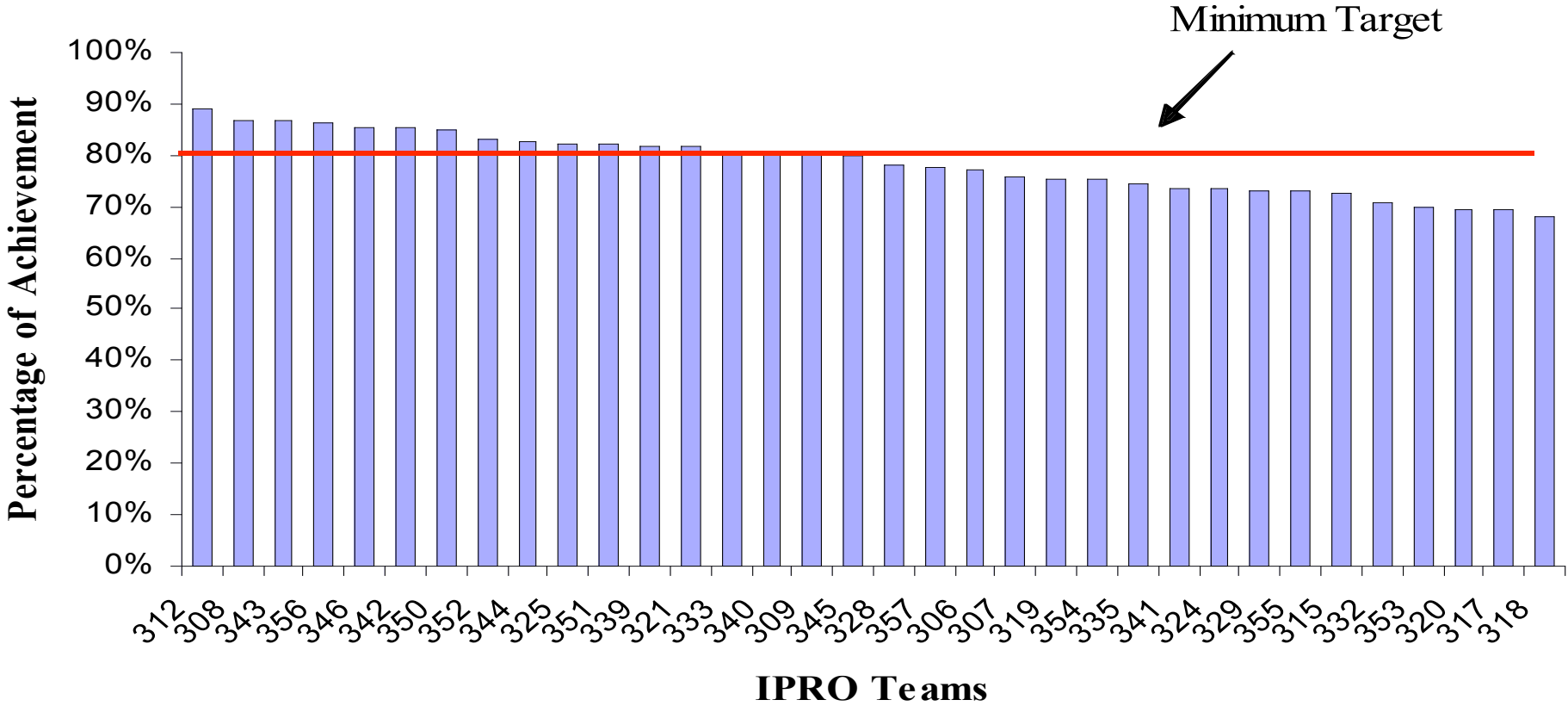
Average Course Ratings



Presentation + Exhibit Score



Fall 06 Overall I PRO Program Average Across All Measures





It takes a team

INTERPROFESSIONAL PROJECTS PROGRAM

Fall 06

IPRO	IPRO Day	Learning Objective Test	Self-Assessment Survey	Course Evaluations	Overall Average
312	89.7%	88.0%	88.0%	90.1%	89.0%
308	90.2%	90.5%	90.5%	76.6%	87.0%
343	82.7%	88.2%	88.2%	88.0%	86.8%
356	80.0%	91.9%	91.9%	82.2%	86.5%
346	85.6%	88.6%	88.6%	78.2%	85.2%
342	88.8%	81.7%	81.7%	88.5%	85.2%
350	89.7%	83.9%	83.9%	83.1%	85.1%
352	87.3%	81.8%	81.8%	81.1%	83.0%
344	82.2%	84.8%	84.8%	78.0%	82.4%
325	84.5%	86.2%	86.2%	71.9%	82.2%
351	75.7%	88.9%	88.9%	74.6%	82.0%
339	92.3%	76.8%	76.8%	81.4%	81.8%
321	84.6%	82.8%	82.8%	76.6%	81.7%
333	80.1%	80.7%	80.7%	81.7%	80.8%
340	89.0%	79.1%	79.1%	75.5%	80.7%
309	88.5%	75.2%	75.2%	83.3%	80.5%
345	81.5%	80.1%	80.1%	78.2%	80.0%
328	64.0%	84.9%	84.9%	78.8%	78.2%
357	89.8%	72.6%	72.6%	75.5%	77.6%
306	91.5%	64.1%	64.1%	88.8%	77.1%
307	81.8%	69.4%	69.4%	82.3%	75.7%
319	92.1%	60.2%	60.2%	88.9%	75.3%
354	80.3%	68.8%	68.8%	82.9%	75.2%
335	81.6%	69.1%	69.1%	78.1%	74.5%
341	85.0%	63.6%	63.6%	81.5%	73.4%
324	85.3%	66.6%	66.6%	75.0%	73.4%
329	91.7%	63.0%	63.0%	74.1%	72.9%
355	85.3%	67.9%	67.9%	70.5%	72.9%
315	85.4%	61.5%	61.5%	82.3%	72.7%
332	81.0%	63.9%	63.9%	74.6%	70.8%
353	79.6%	63.2%	63.2%	74.2%	70.1%
320	82.2%	60.7%	60.7%	74.5%	69.5%
317	73.4%	64.8%	64.8%	74.6%	69.4%
318	83.3%	55.7%	55.7%	77.1%	67.9%
302*	86.6%			83.3%	N/A
311*	88.0%	52.8%	52.8%		N/A

DGY

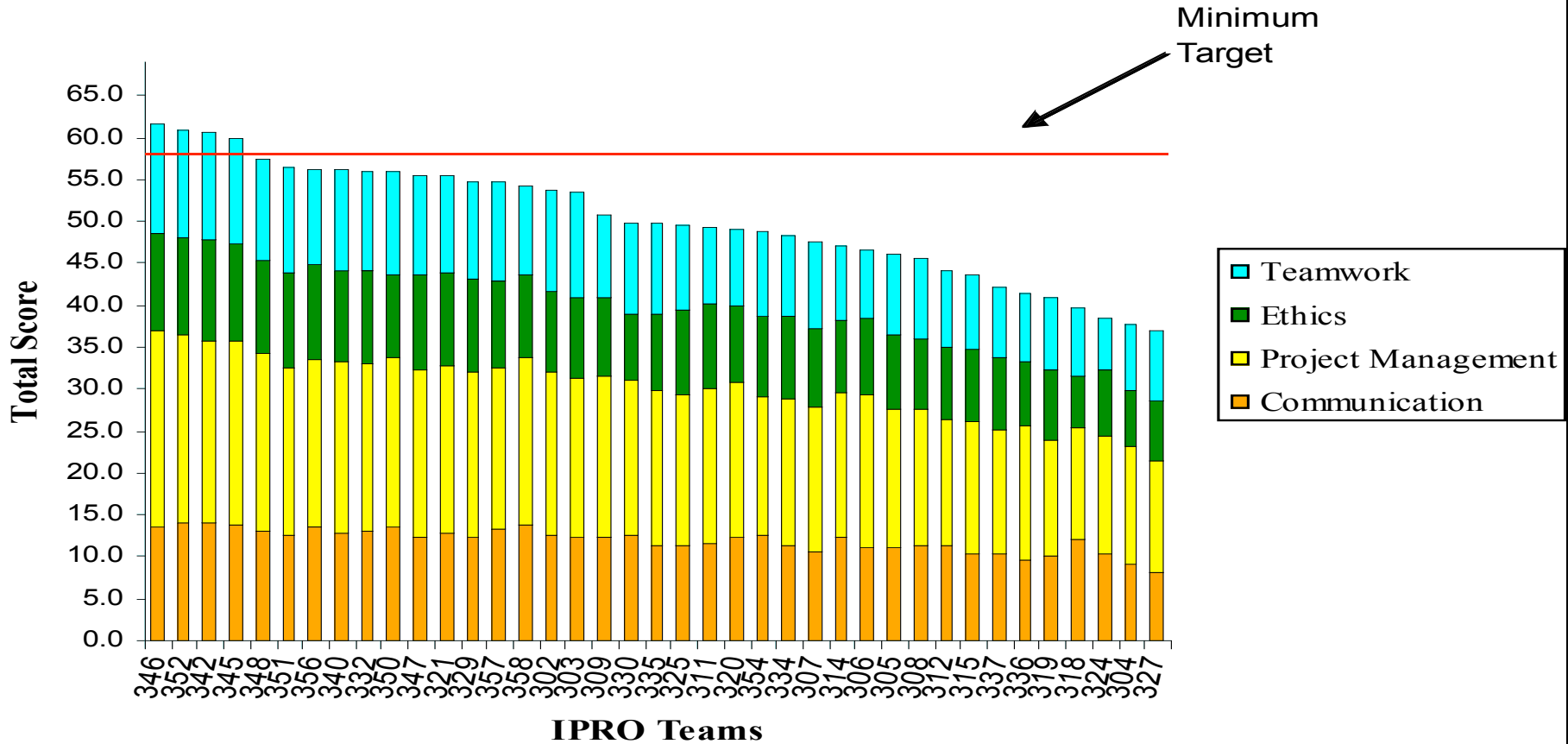
IPRO	Title	Faculty
302	Synthetic Biology	Nick Menhart
306	Enhancing Psychology Research	Michael Young and Dror Ben-Zeev
307	Advancing Shipping Container	Laurence Rohter
308	Developing an Artificial Pancreas	Emmanuel Opara
309	Orthotics & Prosthetics Education	Kevin Meade
311	Using the IIT Intranet Mediator	Ophir Frieder, David Grossman
312	Preliminary Layout for a Caster Factory	Keith McKee, William Maurer
315	Design of a Large-Scale Structure	Jamshid Mohammadi, Jay Shen
317	The VTOL Flying Car: Making it Work!	Francisco Ruiz
318	Searching for Novel Drug Targets	Yuzhu Zhang
319	Logistics Outsourcing Tool	Herb Shield
320	Sustainability Planning for IIT Buildings	Nancy Hamill-Governale
321	Product Design & Performance Evaluation	William Maurer
324	Do-It-Yourself Home Building Training	Frank Flury
325	Developing Extremely Affordable Products	Daniel Ferguson
328	Develop & Prototype a Play for Peace Web Site	Scott Gehrs and Jack Snapper
329	Edutainment	Susan Feinberg
332	Longitudinal Oscillator for Cardiac Arrest Victims	Francisco Ruiz
333	Capturing IIT Reality in Video	Daniel Ferguson
335	Design of a Stadium	Ralph Muehleisen, Eduardo DeSantiago
339	Team Building Games and Training Tools for IPRO Teams	Daniel Ferguson
340	Improving Health Care Information Systems	Daniel Ferguson
341	Nanotechnology & the Public: Part II	Janet Woerner
342	Hybrid Electric School Bus	Ali Emadi, Fernando Rodriguez
343	Technical & Market Integration of Hydroelectric Energy	Mohammad Shahidehpour
344	Wind Energy	Mohammad Shahidehpour
345	Novel Mobile Process for Remediating Contaminated Soils	Javad Abbasian, Harold Lindahl
346	Coal Desulfurization Processes	Javad Abbasian
350	Interactive Language Learning on Mobile Devices	Jim Braband
351	Solar/Battery Hybrid Three-Wheeler Rickshaw for India	Jim Braband
352	ZINDA: Custom Clothing	Jim Braband
353	DNA, Dollars & Drugs	Jon Liao
354	Controlling Your Own Destiny	John Thompson, Jim Burstein, David Pistrui
355	KlarAqua Water Purification System	Nasrin Khalili
356	Plug-in Hybrid Electric Vehicle	Sanjaka Wirasingha
357	myWay+gWay: Touring the High-Tech-Way	Xian-He Sun, Jim Braband

Fall 06 IPRO Program Results

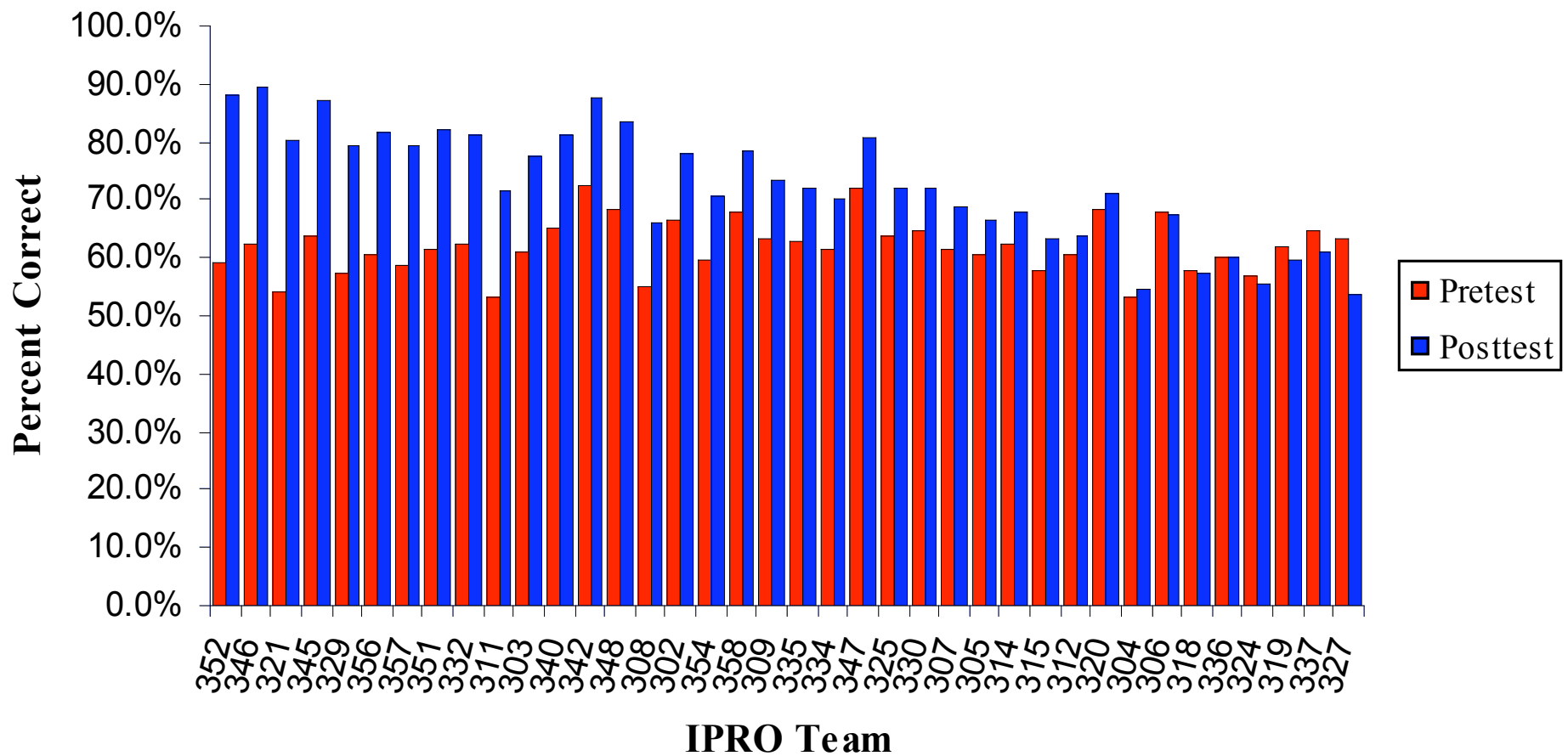
- 1/2 of IPRO teams met the minimum program goals and 1/2 did not.
- Only 7-10 low performing teams out of 36
- IPRO Day scores are inflated relative to other measures due to scaling and lack of judges training and rubrics
- Assessment not available until summer 07

Wrong place
 for red line

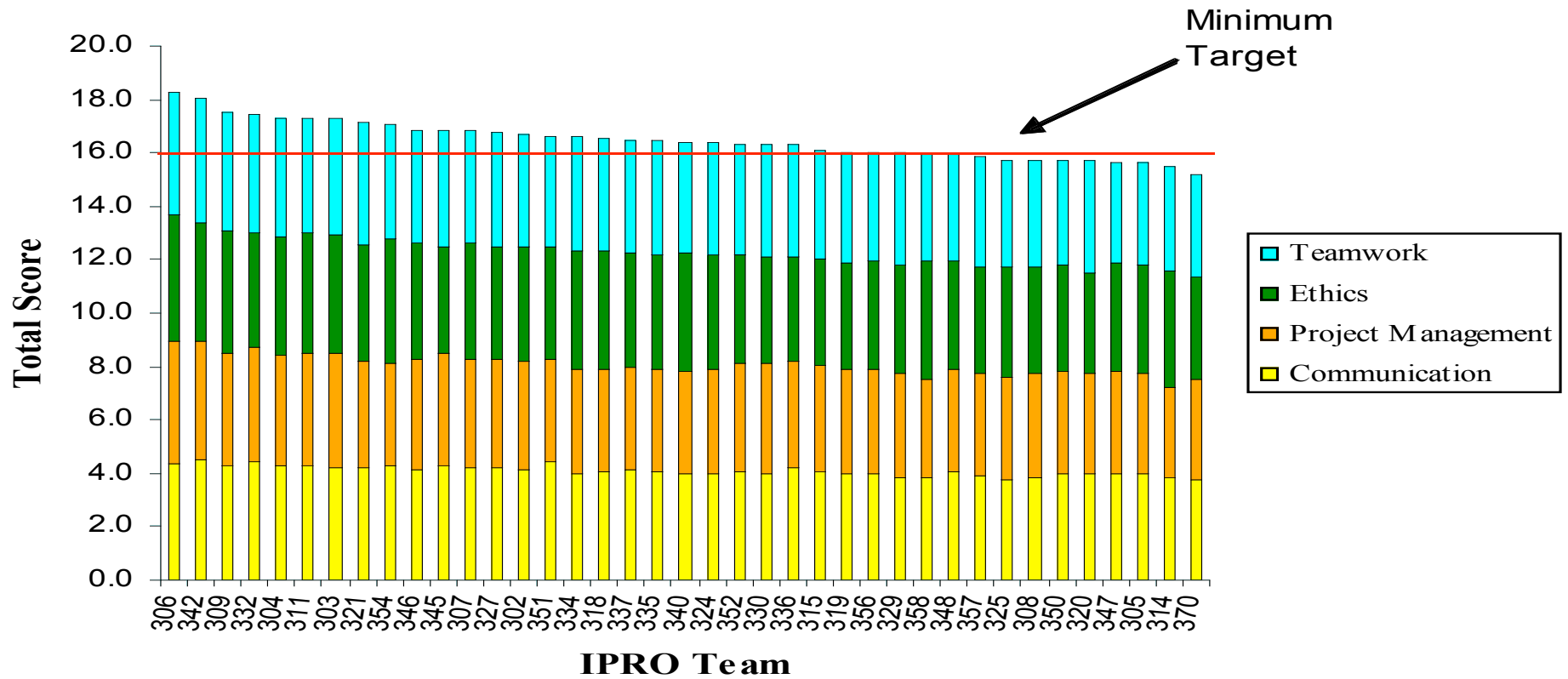
Spring 2007 Learning Objective Posttest



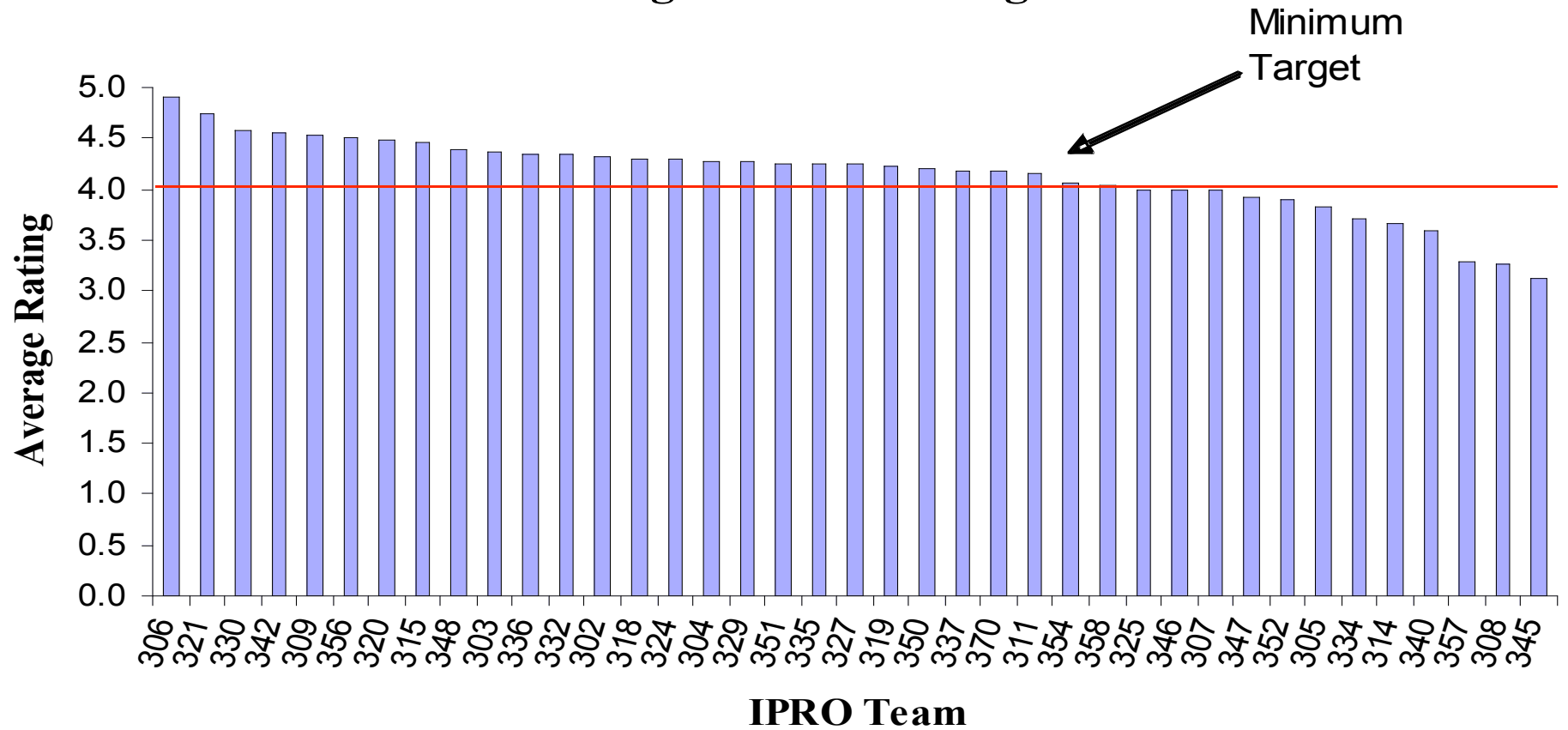
Difference Between Pretest and Posttest



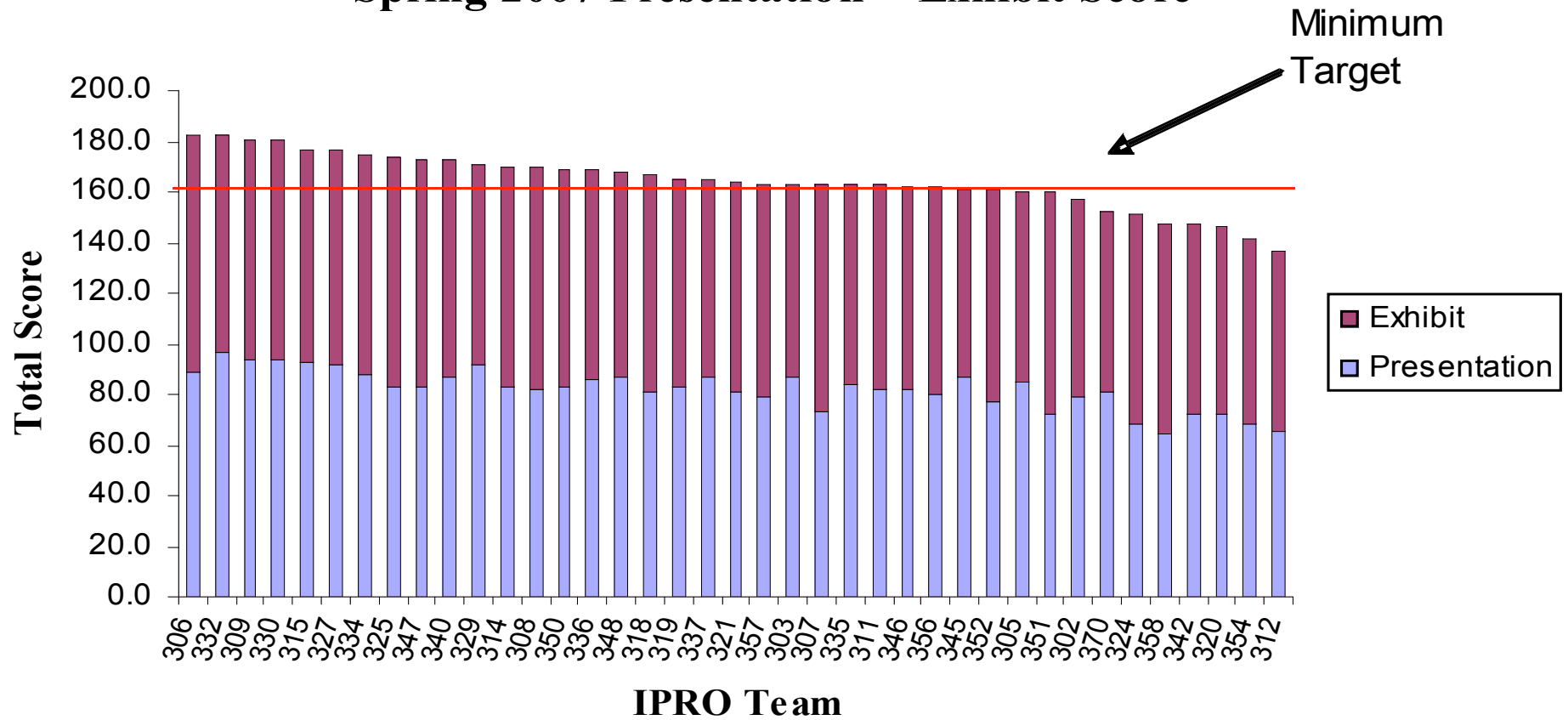
Spring 2007 Learning Objective Self Assessment



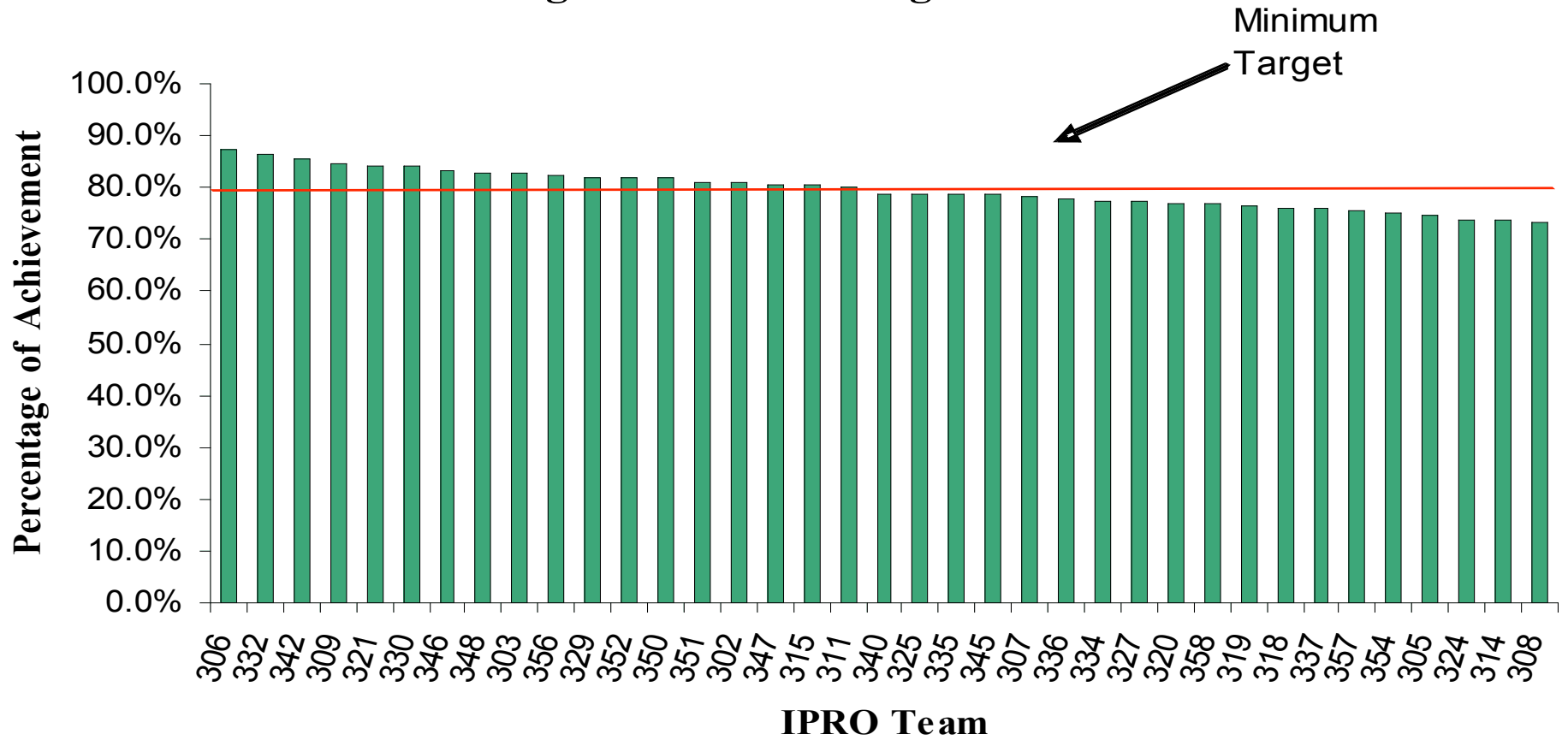
Average Course Rating



Spring 2007 Presentation + Exhibit Score



Overall IPRO Program Team Average Across All Measures



I PRO	I PRO Day	Learning Objective Test	Self-Assessment Survey	Course Evaluations	Overall Average
306	91.3%	67.5%	91.8%	98.2%	87.2%
332	91.0%	81.2%	86.3%	86.7%	86.3%
342	73.5%	87.8%	89.8%	91.0%	85.5%
309	90.1%	73.6%	84.2%	90.4%	84.6%
321	82.1%	80.4%	79.3%	94.8%	84.2%
330	90.1%	72.2%	82.0%	91.7%	84.0%
346	81.2%	89.3%	82.3%	79.9%	83.2%
348	83.9%	83.3%	76.2%	87.8%	82.8%
303	81.6%	77.5%	84.7%	87.2%	82.8%
356	80.9%	81.4%	77.4%	90.0%	82.4%
329	85.3%	79.4%	78.5%	85.3%	82.1%
352	80.5%	88.2%	81.5%	77.8%	82.0%
350	84.3%	81.0%	77.8%	84.2%	81.8%
351	79.8%	81.9%	78.0%	85.0%	81.2%
302	78.5%	77.8%	80.7%	86.4%	80.8%
347	86.5%	80.5%	76.6%	78.2%	80.4%
315	88.5%	63.3%	80.3%	89.4%	80.4%
311	81.3%	71.4%	83.8%	83.1%	79.9%
340	86.2%	81.4%	76.3%	71.7%	78.9%
325	86.7%	71.9%	76.7%	79.9%	78.8%
335	81.5%	72.0%	76.6%	84.9%	78.8%
345	80.6%	87.0%	84.5%	62.3%	78.6%
307	81.6%	69.0%	82.4%	79.8%	78.2%
336	84.3%	60.1%	80.4%	86.9%	77.9%
334	87.1%	70.1%	77.9%	74.0%	77.3%
327	88.5%	53.7%	81.7%	84.7%	77.2%
320	73.1%	71.0%	74.5%	89.6%	77.0%
358	73.9%	78.6%	73.6%	80.9%	76.7%
319	82.7%	59.4%	79.0%	84.5%	76.4%
318	83.5%	57.6%	76.6%	86.0%	75.9%
337	82.2%	61.2%	76.3%	83.7%	75.9%
357	81.7%	79.2%	76.8%	65.5%	75.8%
354	70.5%	70.8%	77.9%	81.2%	75.1%
305	80.2%	66.7%	75.1%	76.3%	74.6%
324	75.5%	55.7%	77.7%	86.0%	73.7%
314	85.0%	68.1%	67.8%	73.3%	73.5%
308	84.8%	66.1%	77.6%	65.3%	73.5%
304	N/A	54.6%	81.4%	85.6%	N/A
312	68.4%	63.8%	N/A	N/A	N/A
370	76.0%	N/A	75.1%	83.6%	N/A

IPRO	Title	Faculty
302	Synthetic Biology: Engineering Novel Organisms	Nick Menhart
303	Information Design for Plant Managers to Predict Equipment Failure	Don Tijunelis
304	User-Centered Design & IT Solutions for Rural Health Workers in India	Linda Pulik
305	Building Wireless Broadband Infrastructure for Maritime Applications	Cindy Hood
306	Enhancing Psychology Research via Advanced Communications Technology	Michael Young
307	Shipping Container Transport System Solutions	Laurence Rohter
308	Developing an Artificial Pancreas	Emmanuel Opara
309	Orthotics & Prosthetics Education for Latin America	Kevin Meade
311	Helping Fight Computer Crime: The Misuse Problem	David Grossman
312	Rapid Response Caster Manufacturing	William Maurer
314	The Art of Wind Power	Mahjoub Elnimeiri
315	Design of a Large-Scale Bridge Structure	Jeffrey Budiman
318	Searching for Novel Drug Targets	Yuzhu Zhang
319	Decision Making Tool for Warehouse Logistics Pricing	Herb Shields
320	Planning a New Enterprise Resource Planning Software Platform	William Maurer
321	Consumer Product Design & Performance Evaluation	William Maurer
324	Disaster Recovery: Do-It-Yourself Home Building Training	Frank Flury
325	Developing Extremely Affordable Products for the Rural Poor of the World	Daniel Ferguson
327	Sustainable Water Distribution System in Pignon, Haiti	Arthur Kurzydlo
329	Simulations: Health Physics Computer Game Design	Susan Feinberg
330	Creating a Math and Science Fair Project Bank for Chicago Public Schools	Gregory Fasshauer
332	Our Energy Future: Creating Multimedia Education Modules	Jim Braband
334	Resource Consumption Awareness in the Home	Thomas J. McLeish
335	Renovation of Alumni Memorial Hall	Ralph Muehleisen
336	Innovative Designs for Building Airflow, Sustainability & Fire Safety	Ahmed Megri
337	Energy Efficient Lighting Design Using LEDs and Other Technologies	Nancy Hamill -Governale
340	Automated Referral System for Community Health Care Network	Daniel Ferguson
342	Hybrid Electric School Bus: Simulation, Design, and Implementation	Ali Emadi
345	Optimizing a Modern Refinery for Fuels & Petrochemicals	Javad Abbasian
346	Design & Economic Evaluation of Bioethanol Production from Corn	Javad Abbasian
347	Developing a Microbrewery System	Javad Abbasian
348	Design & Analysis of a 20 Megawatt Geothermal Power Plant	Javad Abbasian
350	Browsable Audio for Interactive Language Learning Mobile Devices	Jim Braband
351	Hybrid-Powered Three-Wheeled Auto Rickshaw for India	Jim Braband
352	E-Tailoring: A Custom Clothing Venture	Jim Braband
354	Controlling Your Destiny: Web Tool for Managing Job Search Success	Jim Burstein
356	Plug-In Hybrid Electric Vehicle	Sanjaya Wiyasingha
357	gWay-Advanced Technology for Guided Tours	Jim Braband
358	Sonar for Blind and Visually Impaired Swimmers	Daniel Ferguson
370	Crisis Management & Security Assessment Program	Dan Tomal

Spring 07

- 18-24 teams met the minimum program goals
- Failure to include the Learning Objectives test in the grading framework is the principal obstacle to improving program results
- 6-10 teams out of 40 appear truly dysfunctional in some way

New Program Interventions for AY 07/08

- New Ethics seminar and code of ethics team requirement
- Rewrite of the ENPRO Business Planning Learning Objective and New ENPRO Lecture series and new ENPRO LO tests
- New presentation skills workshop
- Required midterm presentations
- New automated peer evaluation system
- Expanded faculty orientation briefings and handbook and IPRO faculty website
- New rubrics for IPRO Day judges and online video based judges training
- Revision of IPRO Day judging to include design, process improvement, innovation and multicultural awareness

IPRO Program Operations and System initiatives for AY 07/08

- Expanded iGROUPS functionality and user manuals and beta tests with Auburn and Michigan Tech
- Faculty portal on IPRO website
- One week turnaround goal on graded reports and tests
- IPRO Day scores and end of semester deliverables grading completed in time to be included in student grades
- Online registration for IPRO events
- Video taping of all workshop, ENPRO lectures and midterm presentations for IPRO website streaming video
- Continuing the IPRO OPT intern position
- Scheduling all IPRO activities and deliverables before the beginning of the semester

IPRO Program Research Initiatives AY 07/08

- Benchmarking Code of Ethics development with Michigan Tech, Lehigh and Rice
- Aligning teamwork research with instruments and data from Purdue EPICS program
- Correcting inter-rater error in IPRO Day judging through training and monitoring of results and new scale in judges forms
- Introducing and piloting new learning objectives on design, process improvement, innovation and multicultural awareness before the 2008 ABET visit
- Analyzing the impact of groupware [iGROUPS & iKNOW] on the attainment of learning objectives